

8. Routing and Transaction Monitoring

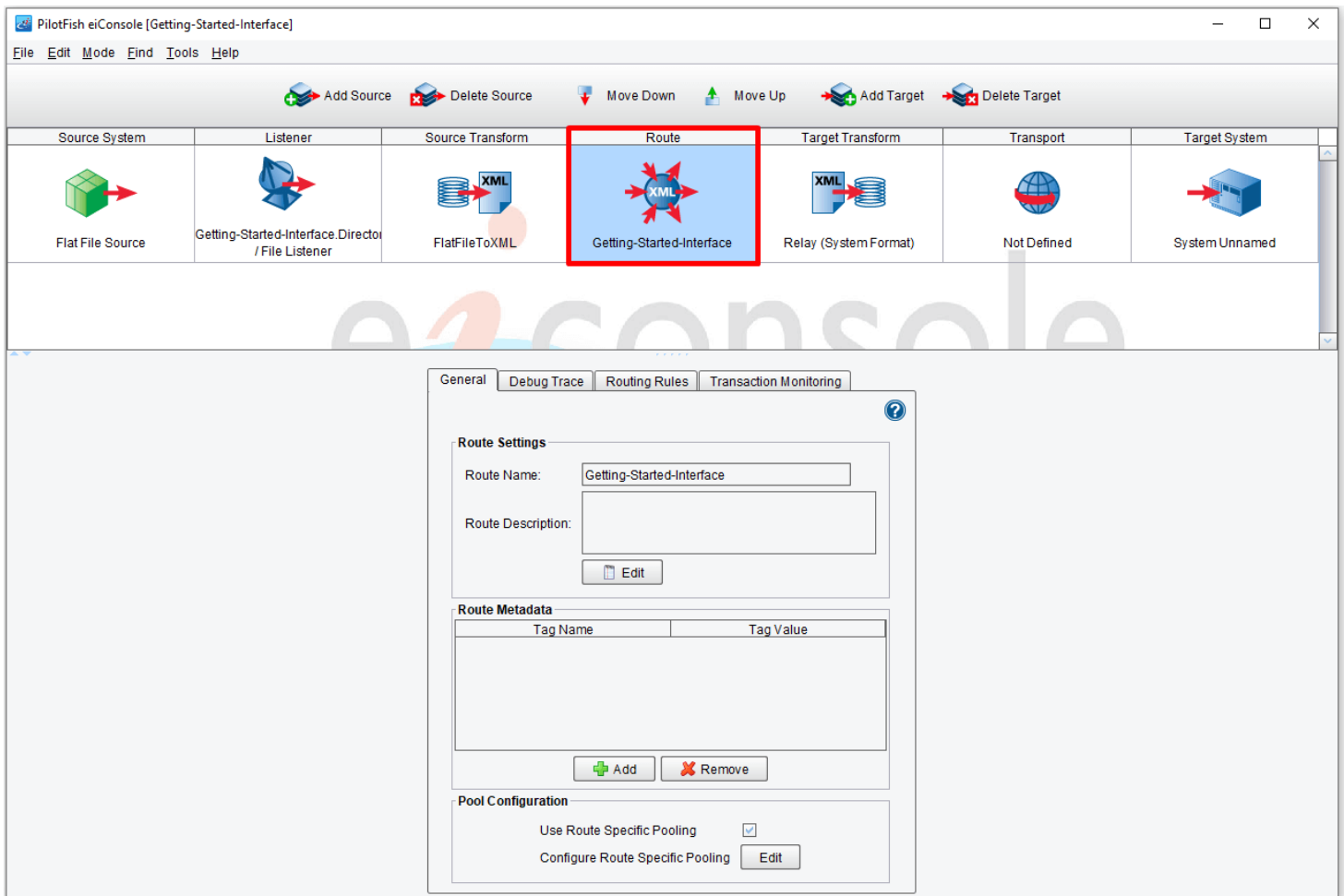
<https://cms.pilotfishtechnology.com/routing-transaction-monitoring-tutorial-integration-software>

eiConsole v.24R1
Tutorial 30 mins

eiConsole Foundation Tutorial Routing and Transaction Monitoring

You will need to navigate to the Working Directory **c:\Users\{USER_NAME}\PilotFish eiConsole Working Directories\Foundation** where {USER_NAME} is the user's name which was included in the sample files you downloaded in the first Foundation Tutorial – [Creating a Working Directory](#).

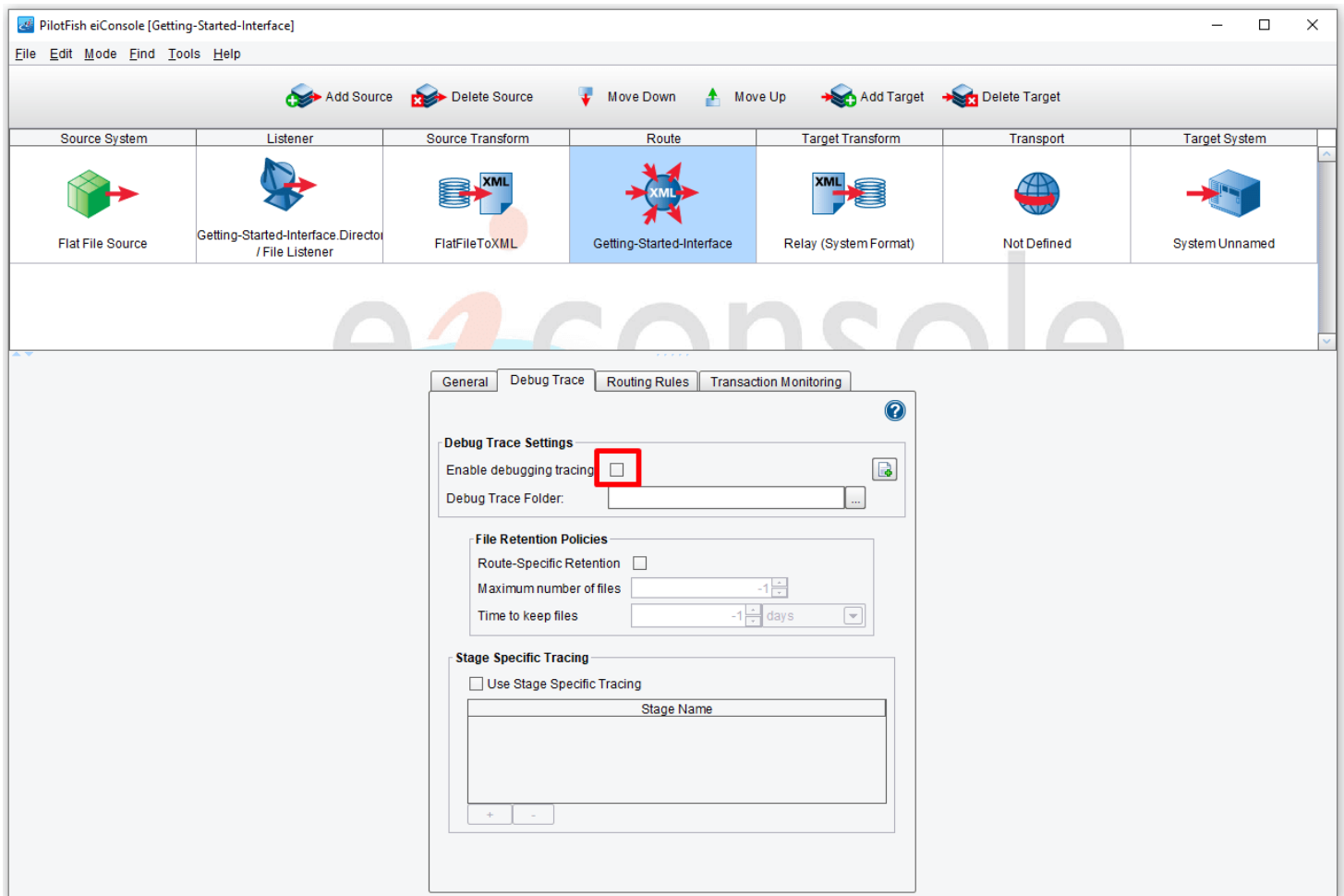
Note: The Tutorials in eiConsole Foundation, 1-13, are modular and are designed to be used in the sequence presented.



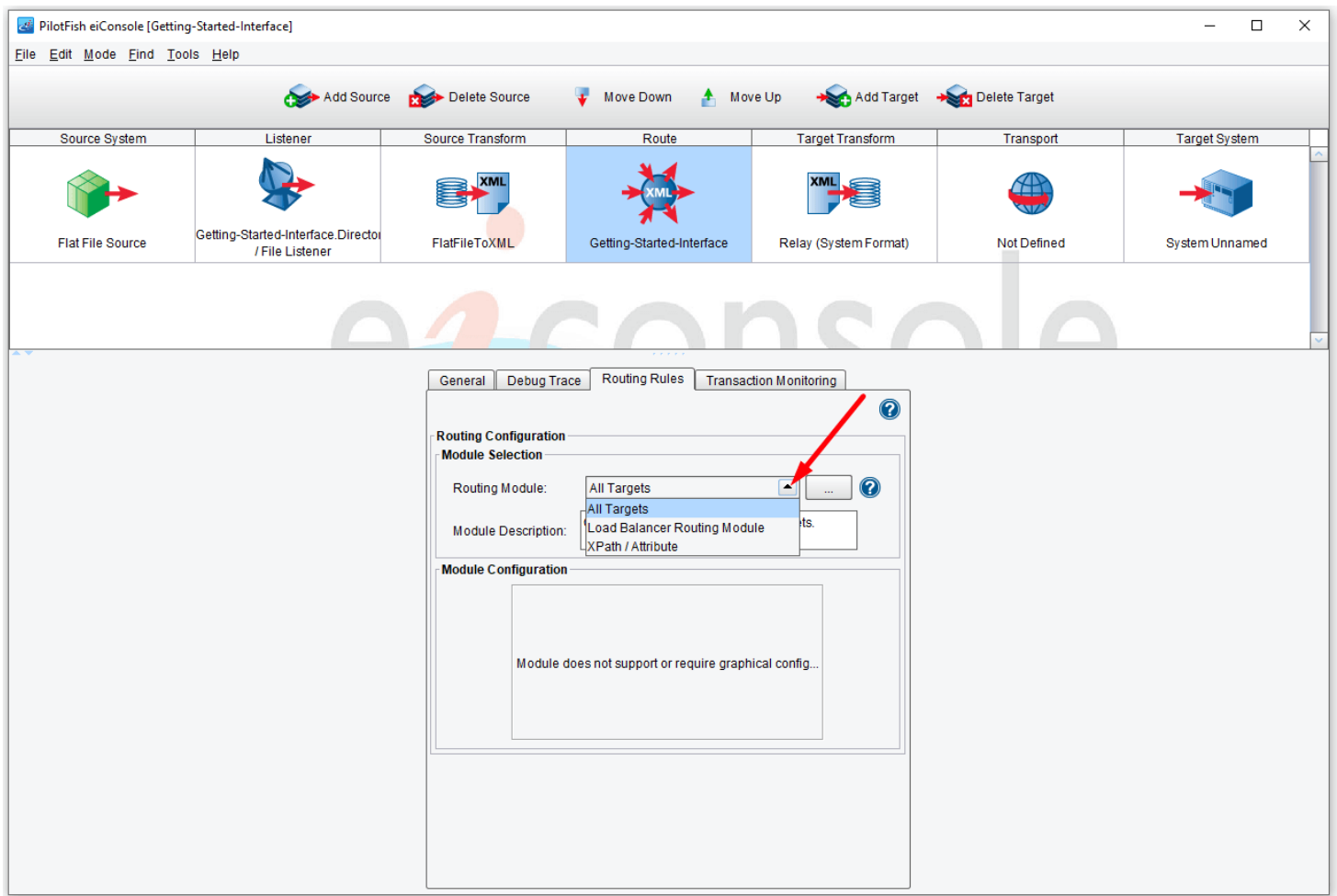
In the Routing stage, you will have the opportunity to implement Routing Rules that will help you determine which one of potentially many [target](#) systems to send the data to.

When you click on the Route stage, the default tab in the dialogue window is General. Leave the panel's settings as

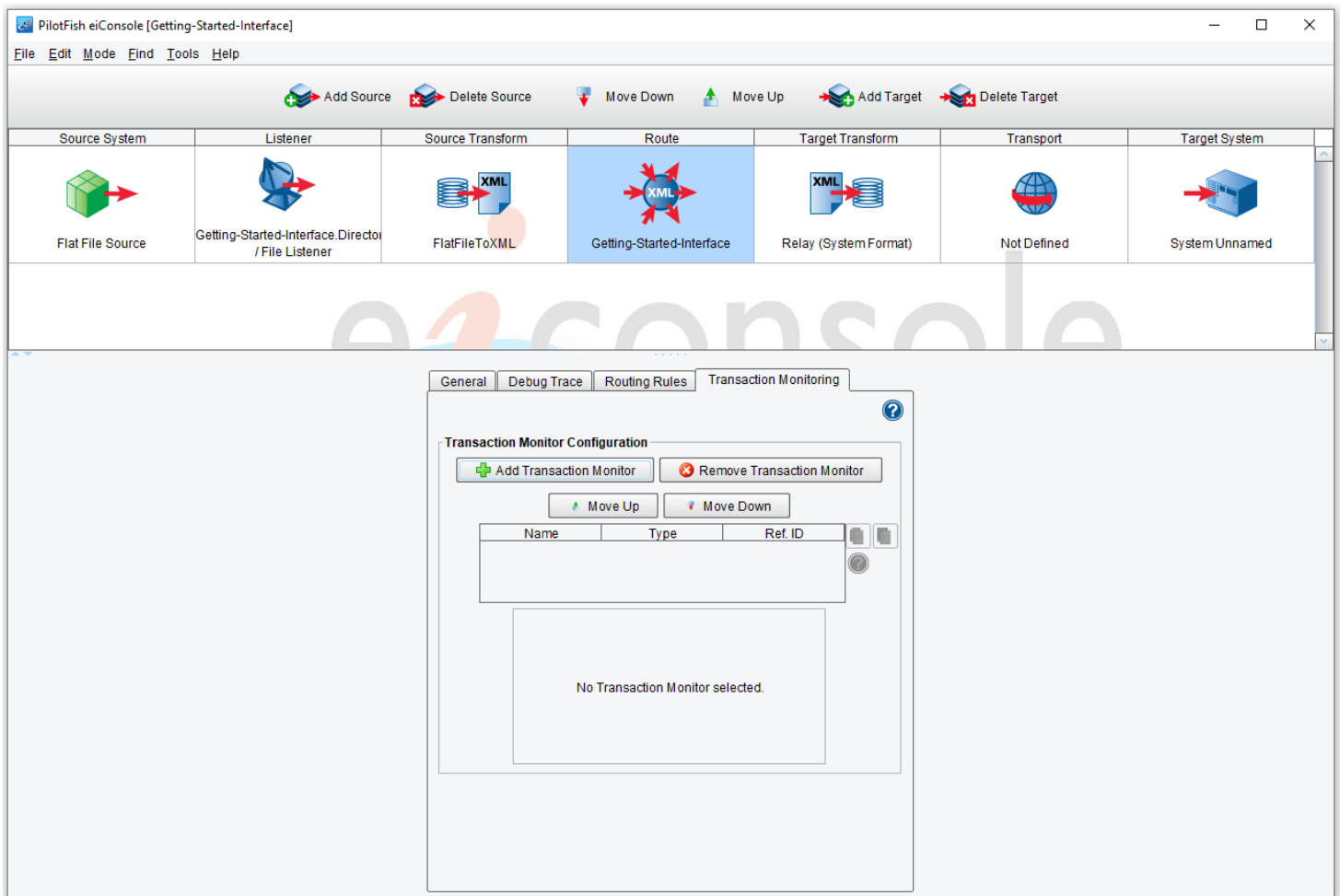
they are configured.



Click on the Debug Trace tab. Leave the **Enable debugging tracing** unchecked.



Click on the Routing Rules tab. Because there is only one Target in this [interface](#), the **All Targets** Routing Module should be selected (this is the default).



Select the **Transaction Monitoring** Tab.

In the **Route** stage, you can also configure Transaction Monitoring. Transaction Monitoring allows you to configure the system's behavior when something goes wrong. Proactive notifications can be sent through email, SNMP trap, or several other mechanisms. You can add transaction monitors by clicking the **Add Transaction Monitor** button in the panel. Click the **Add Transaction Monitor** to view the dialogue. Here you would enter the name of the monitor and select the monitor type. Leave the **Transaction Monitor** blank. Click cancel and proceed to the next lesson - [An Introduction to Target Transformation](#).