

10. Configuring a Transport

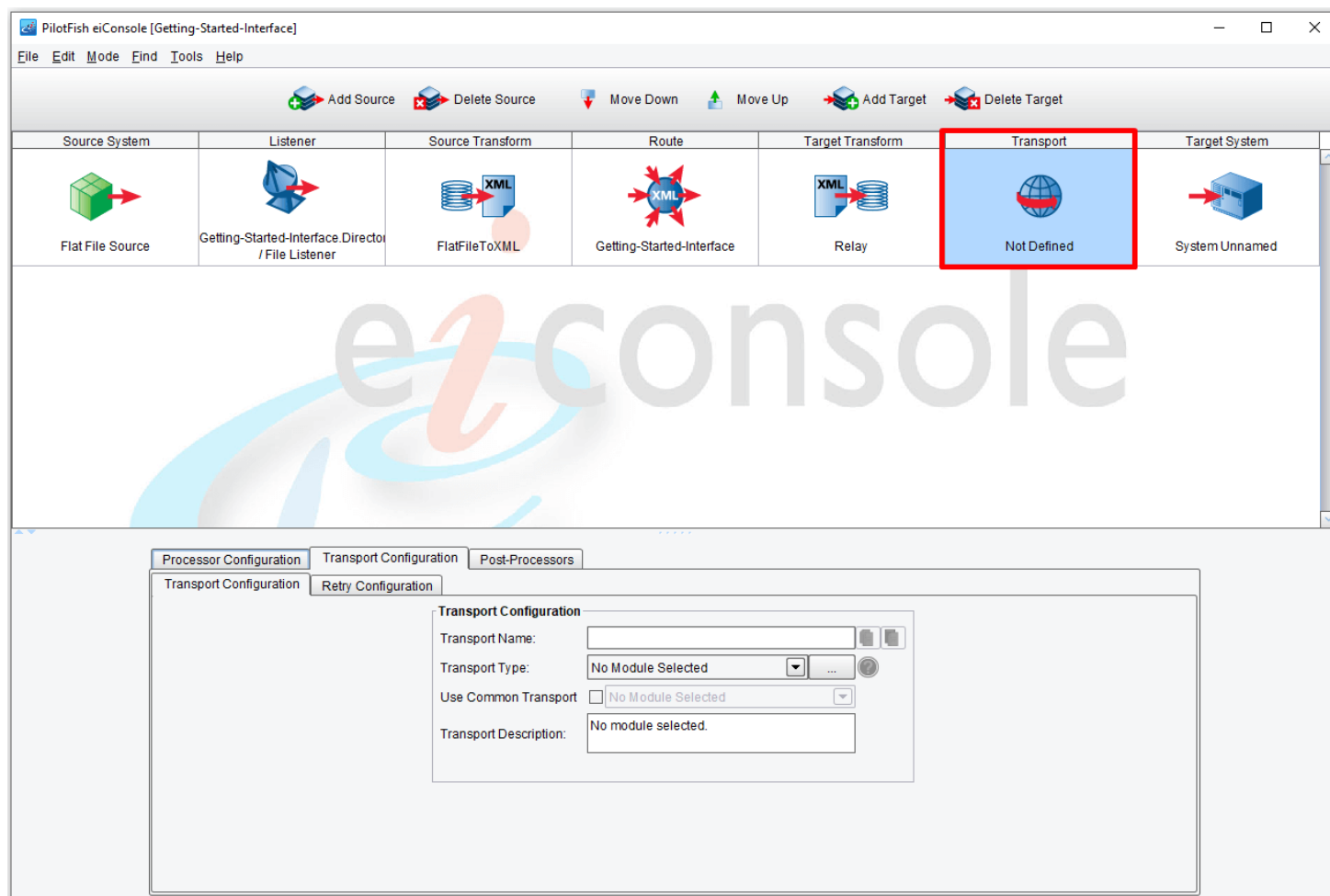
<https://cms.pilotfishtechnology.com/transport-adapter-connector-tutorial-pilotfish>

eiConsole v.24R1
Tutorial 30 mins

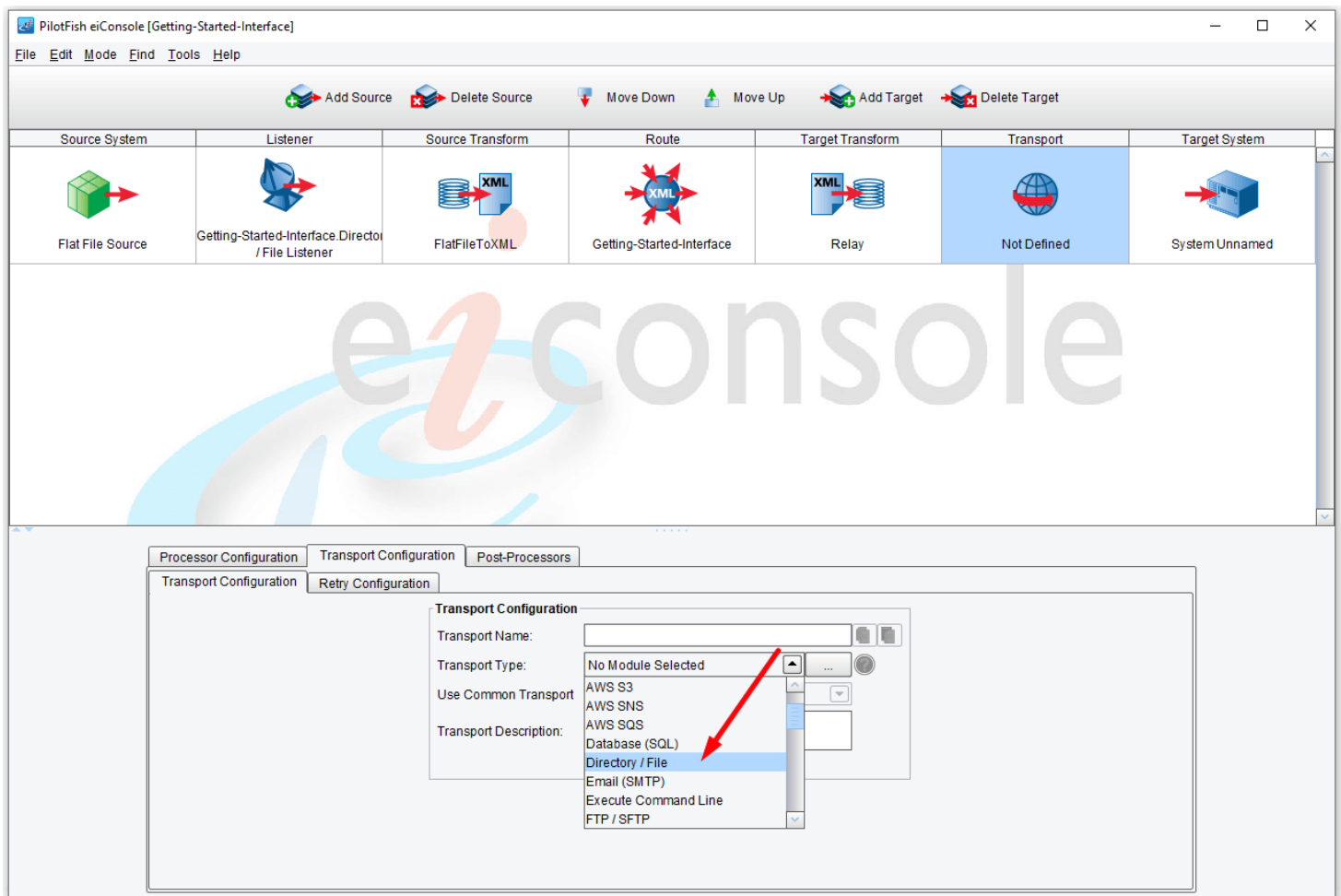
eiConsole Foundation Tutorial Configuring a Transport

You will need to navigate to the Working Directory **c:\Users\{USER_NAME}\PilotFish eiConsole Working Directories\Foundation** where {USER_NAME} is the user's name which was included in the sample files you downloaded in the first Foundation Tutorial – [Creating a Working Directory](#).

Note: The Tutorials in eiConsole Foundation, 1-13, are modular and are designed to be used in the sequence presented.

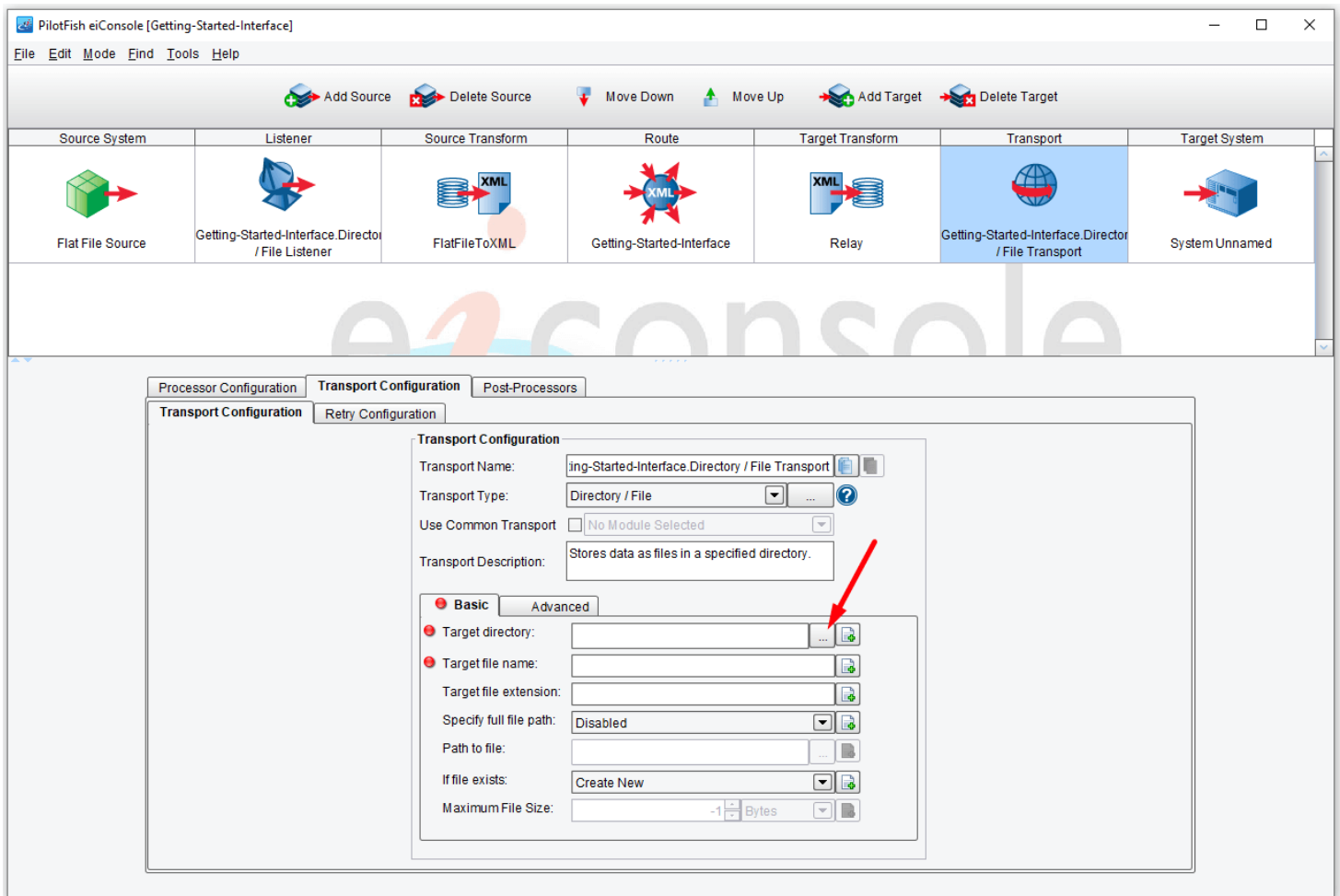


The Transport stage allows you to configure how the eiPlatform or eiConsole should transmit the data to the [Target System](#).

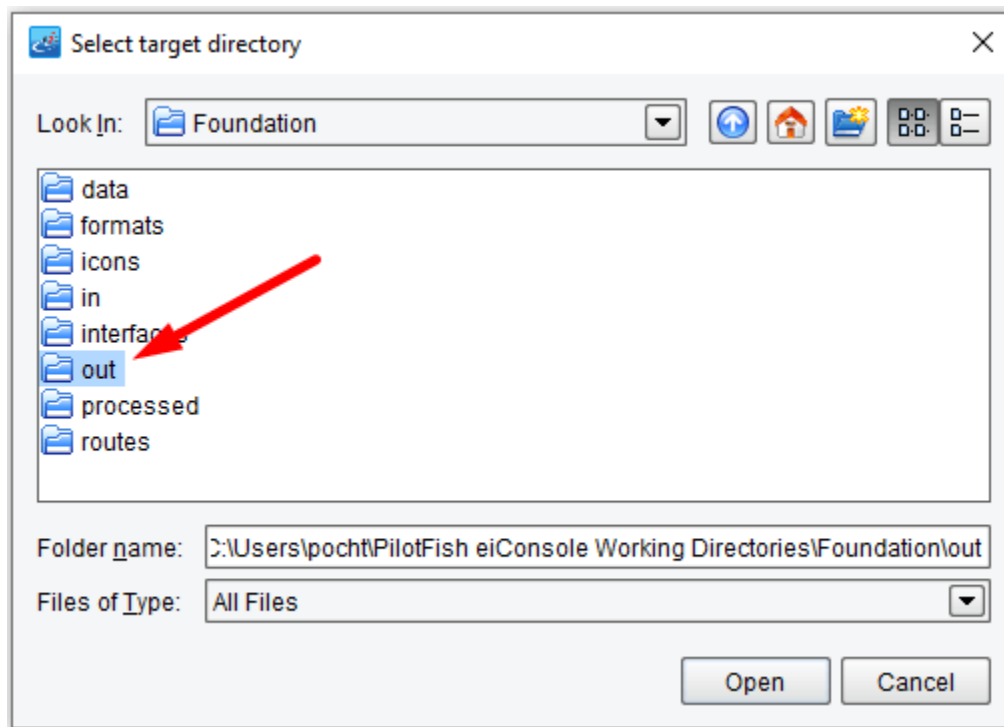


In this tutorial, you will drop the data to be processed into a Directory. Set **Directory/File** as the Transport Type from the drop-down. Notice that the eiConsole includes a full range of Transport Types.

See the complete list of available [Transports in the PilotFish Platform](#).

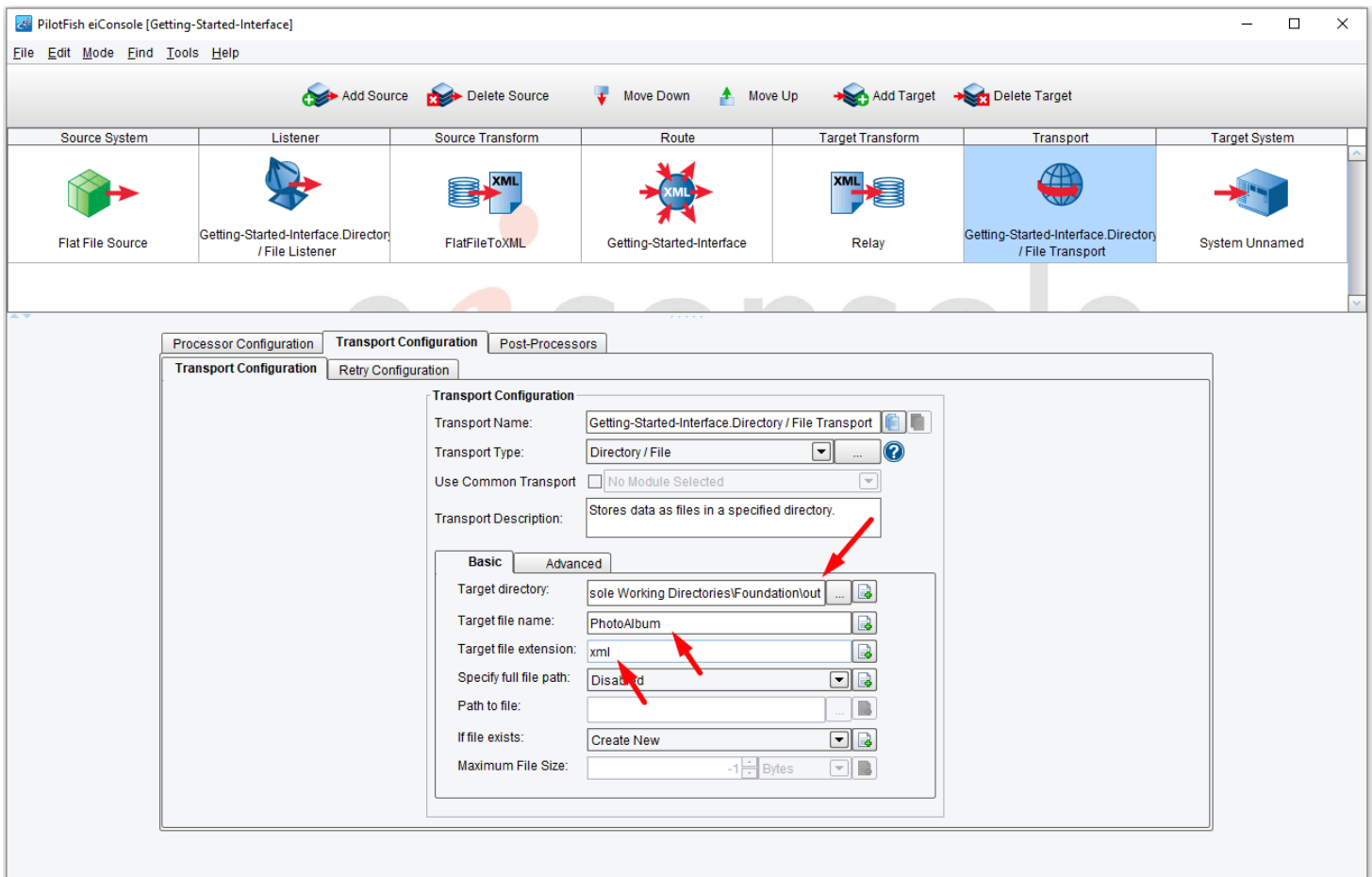


When you select the **Directory/File** Transport, you will see 2 tabs open: Basic and Advanced. For this [interface](#), you only need to work with the Basic Tab, which includes the following fields: **Target directory**, **Target file name** and **Target file extension**. To select the Target directory, choose the **Ellipsis** button.



When the **Select target directory** dialogue opens, navigate to your [Working Directory](#). Select the "out" folder, then click **Open**.

Note: *Best practice is to use separate directories for input and output, otherwise it creates ambiguity in the system.*



The drop folder now appears in the Target directory field. In the Target file name enter "**PhotoAlbum**." In the Target file extension enter "**xml**".

You have now configured each of the key [stages](#) in the eiConsole interface. Continue to the next tutorial, [Adding a Target name and icon](#).