

12. Testing Using the Inline Test Mode

<https://cms.pilotfishtechnology.com/interface-route-testing-tutorial-pilotfish>

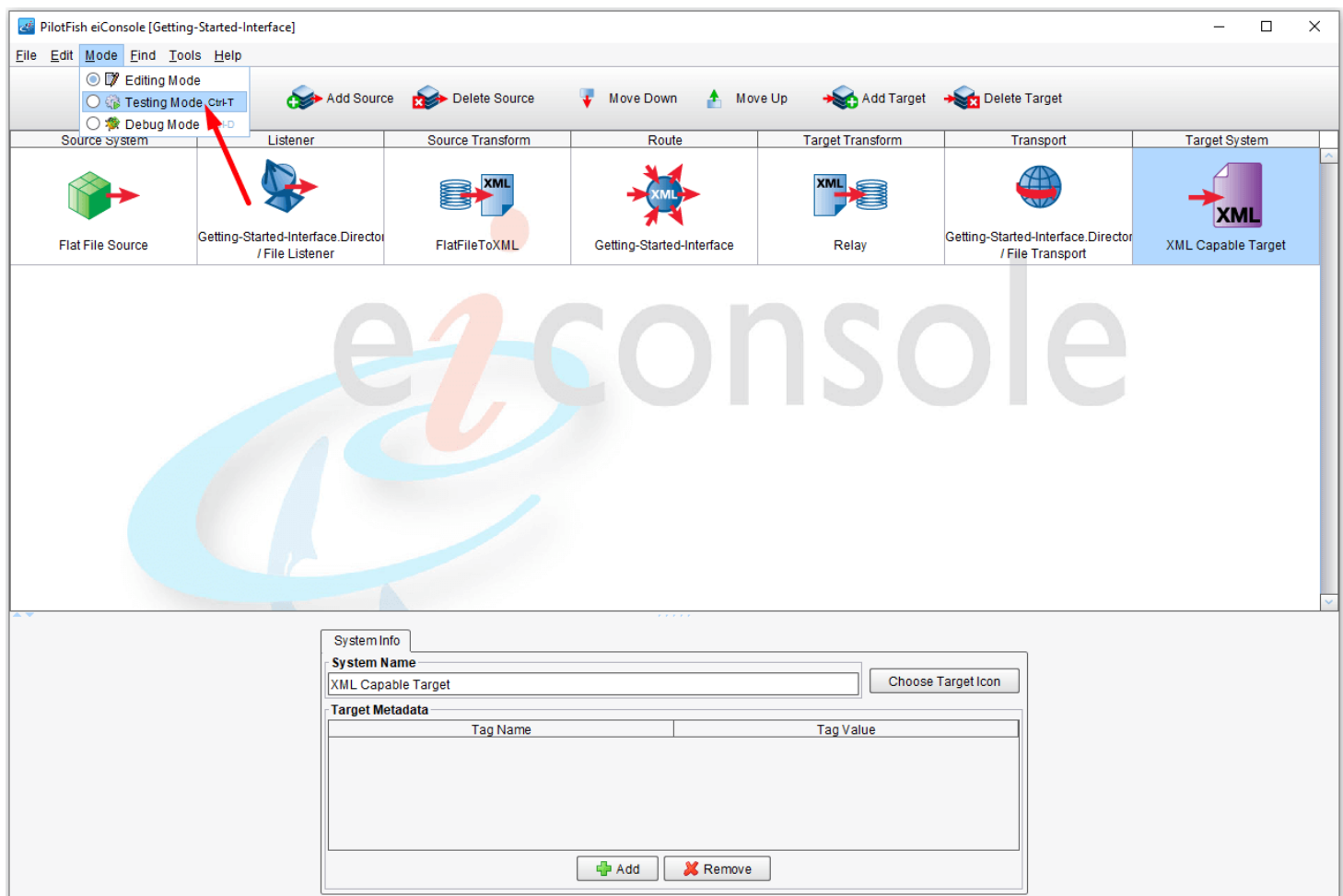
eiConsole v.24R1
Tutorial 60 mins

eiConsole Foundation Tutorial

Testing an Interface Using the Inline Testing Mode

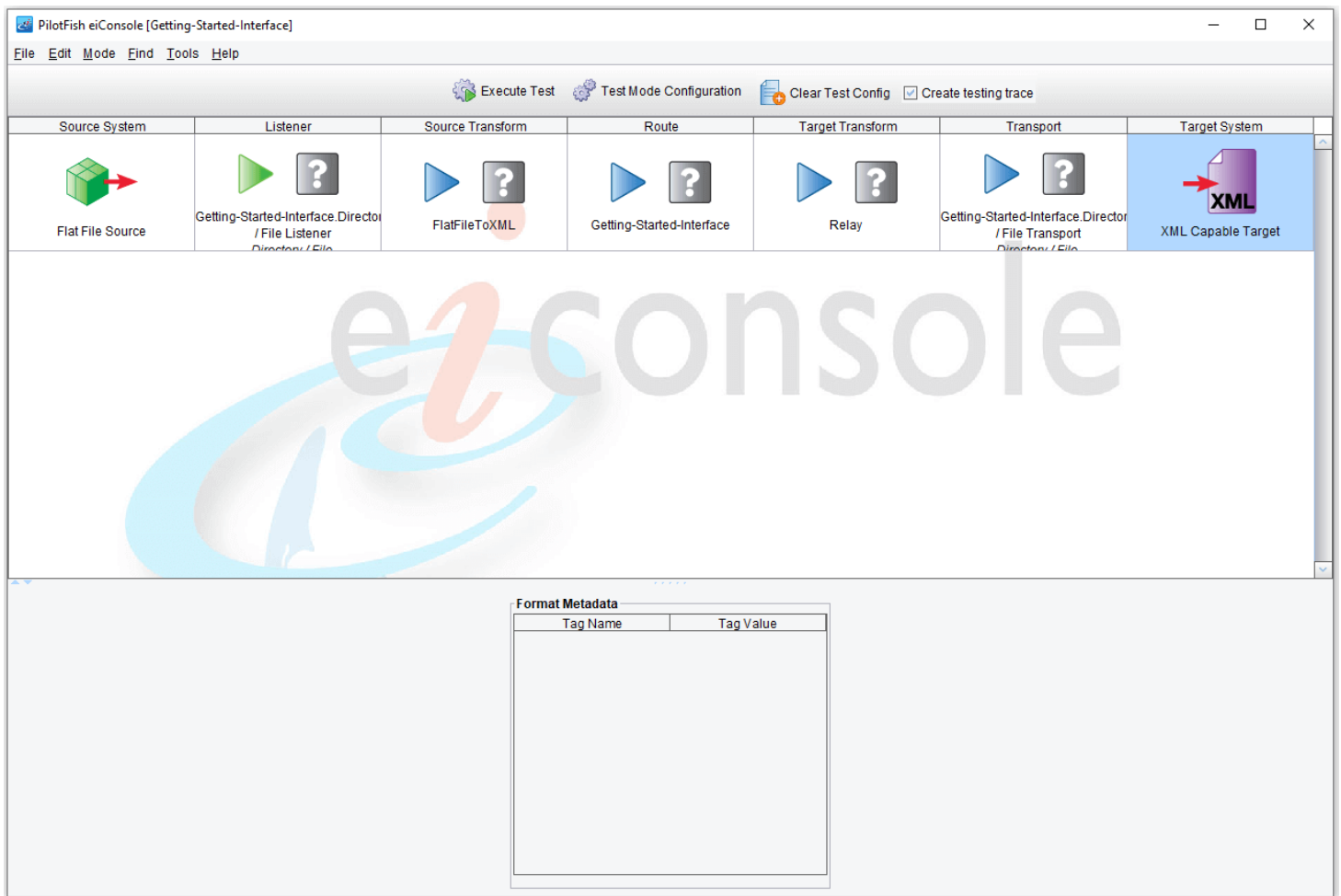
You will need to navigate to the Working Directory **c:\Users\{USER_NAME}\PilotFish eiConsole Working Directories\Foundation** where {USER_NAME} is the user's name which was included in the sample files you downloaded in the first Foundation Tutorial – [Creating a Working Directory](#).

Note: The Tutorials in eiConsole Foundation, 1-13, are modular and are designed to be used in the sequence presented.

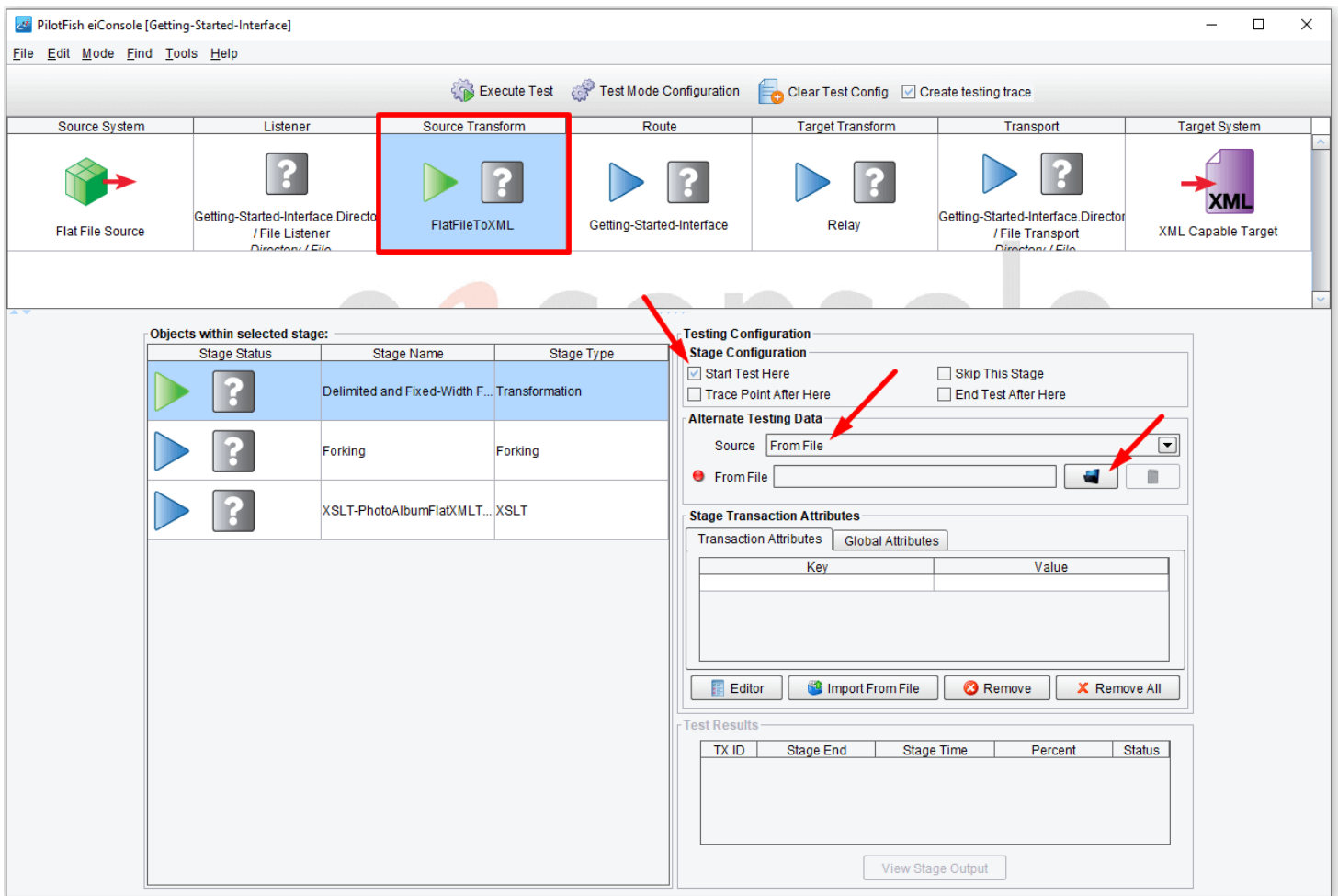


Now that the [interface](#) is configured from Source to [Target](#), you can test its behavior before deployment to an eiPlatform environment.

Underneath the Mode drop-down, select **Testing Mode**.



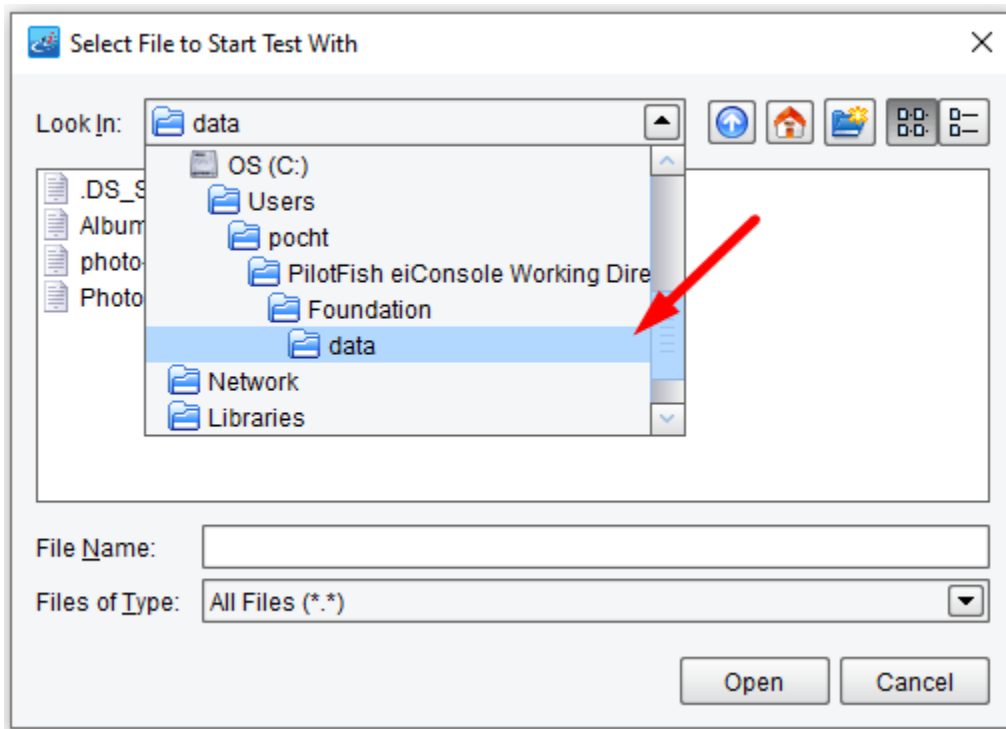
When you switch to Testing Mode, all of the icons between the Source and the Target become question marks, indicating [stages](#) that you may choose to test.



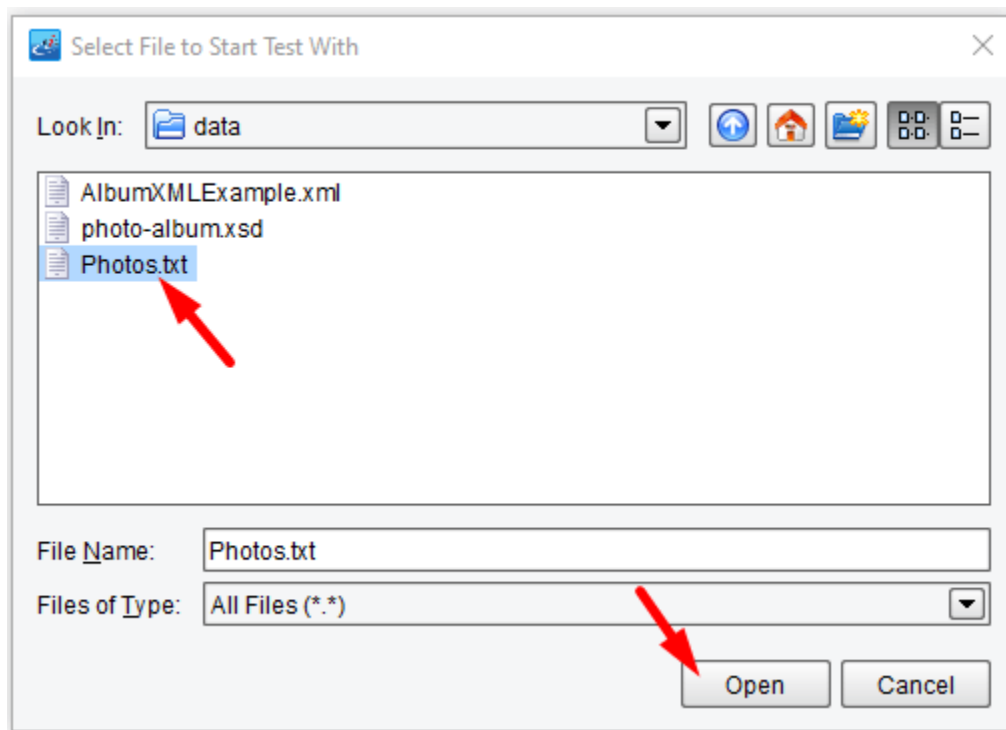
For this tutorial, you will want to start your test with the Source Transformation. Click the [Source Transform](#) stage and then select the **Start Test Here** checkbox. A green icon will appear in the Source Transform box to indicate that the test will start here.

Blue arrows indicate a stage of the test that may be executed. For our purposes, allow the test to flow all the way through to the [Transport](#) of the file to the directory.

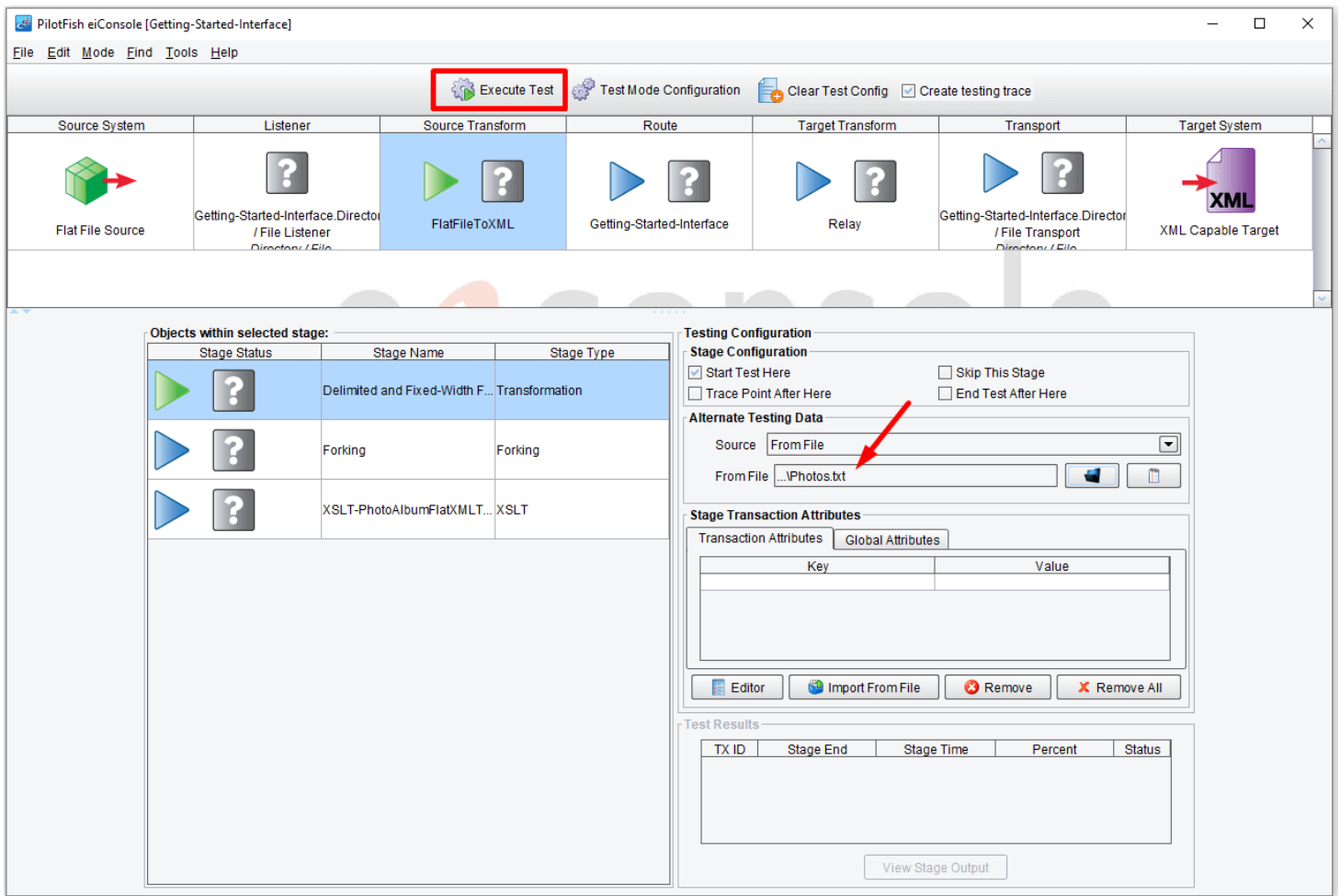
Select the **From File** from the drop-down menu and click on the **Browse** button.



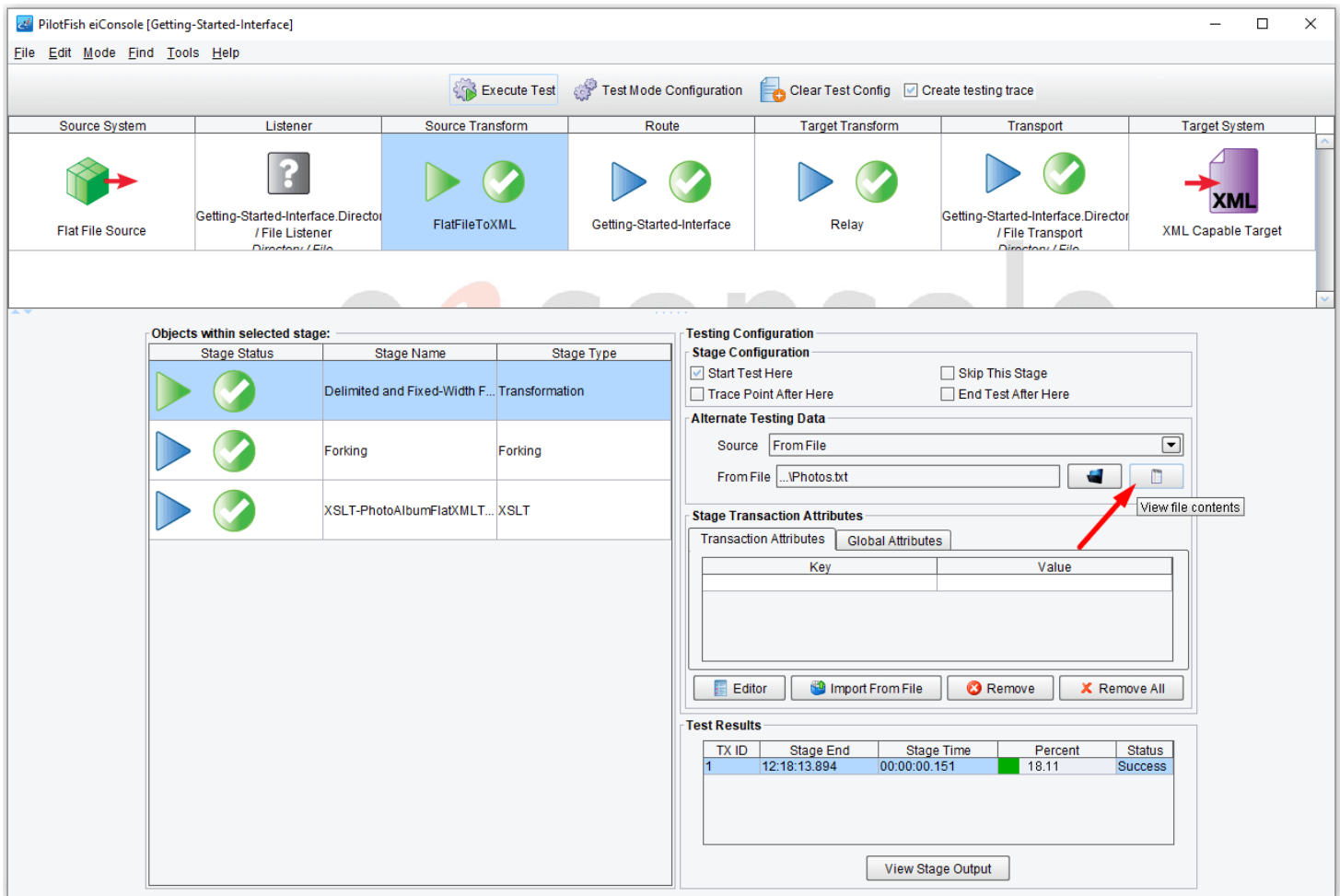
Navigate to the **c:\Users\{USER_NAME}\PilotFish eiConsole Working Directories\Foundation** folder or your distribution sample folder and double-click the **data** folder to open.



Then select the **Photos.txt** file and click **Open**.



Click on the **Execute Test** button.







In a few seconds, the file will be picked up. As each stage completes, the question marks will be replaced by **green checkmarks** indicating that the stage has been completed successfully.



If there is an error, the blue question mark will become a red x. You can click on the stage with the red x to view the errors. If for example, the x is in the Source Transform stage, you may want to retrace your steps for that stage to see if you missed a step, failed to check a box or enter a field, etc.

You can now look at how the data appeared at each stage. With Source Transform selected, click the **View** button.

Stage Output Viewer



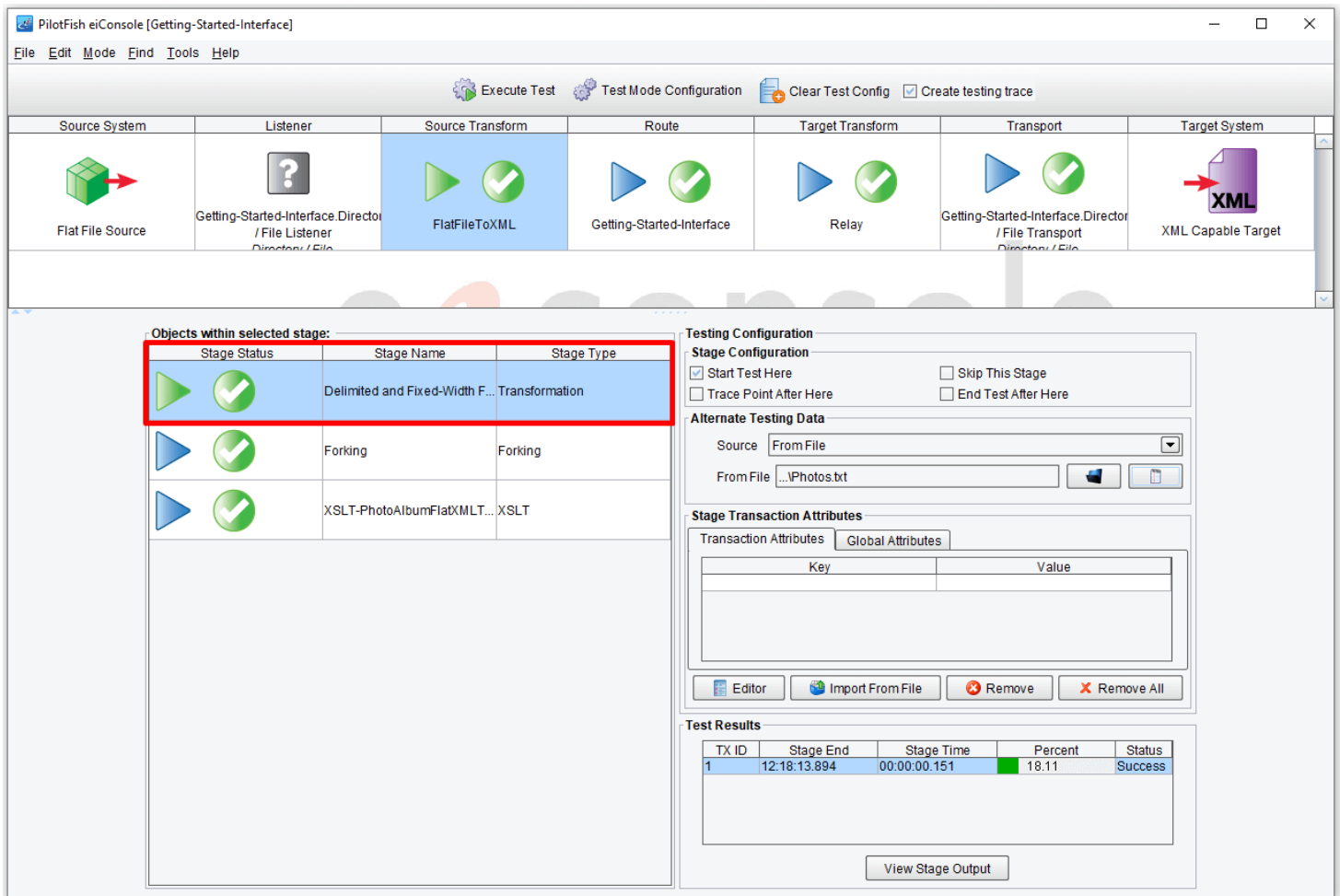
Find:



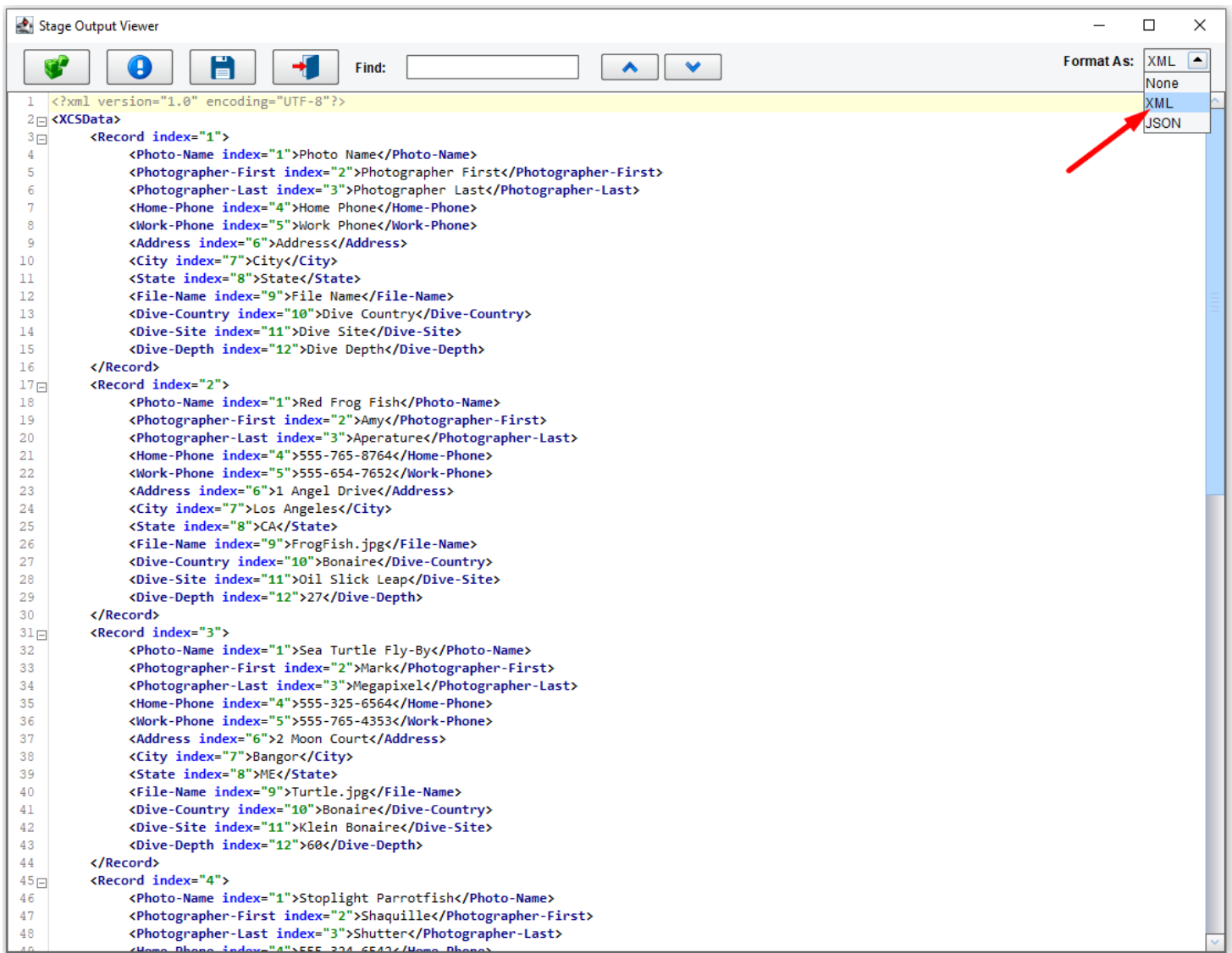
Format As: XML

	Photo Name	Photographer First	Photographer Last	Home Phone	Work Phone	Address	City State	File Name	Dive Country	Dive Site	Dive Depth		
1	Red Frog Fish	Amy	Aperature	555-765-8764	555-654-7652	1 Angel Drive Los Angeles	CA	FrogFish.jpg	Bonaire	Oil Slick Leap	27		
2	Sea Turtle Fly-By	Mark	Megapixel	555-325-6564	555-765-4353	2 Moon Court Bangor	ME	Turtle.jpg	Bonaire	Klein Bonaire	60		
3	Stoplight Parrotfish	Shaquille	Shutter	555-324-6542	555-762-8763	3 Ladybug Lane Naples	FL	StoplightParrotfish.jpg	Bonaire	Klein Bonaire	55		
4	Golden Necklace Eel	Lenny	Lens	555-264-2372	555-876-5463	4 Bow Street Providence	RI	Eel.jpg	Bonaire	Town Pier	17		
5	Stingray Ziggy	Zoom		555-765-7632	555-765-3655	5 Main Street Middletown	CT	Stingray.jpg	Grand Cayman	Stingray City	18		
6	French Angels	Phill	Film	555-875-3465	555-654-4655	6 Hastings Turn Chicago	IL	Two French Angelfish.jpg	Grand Cayman	North Wall	85		
7													
8													

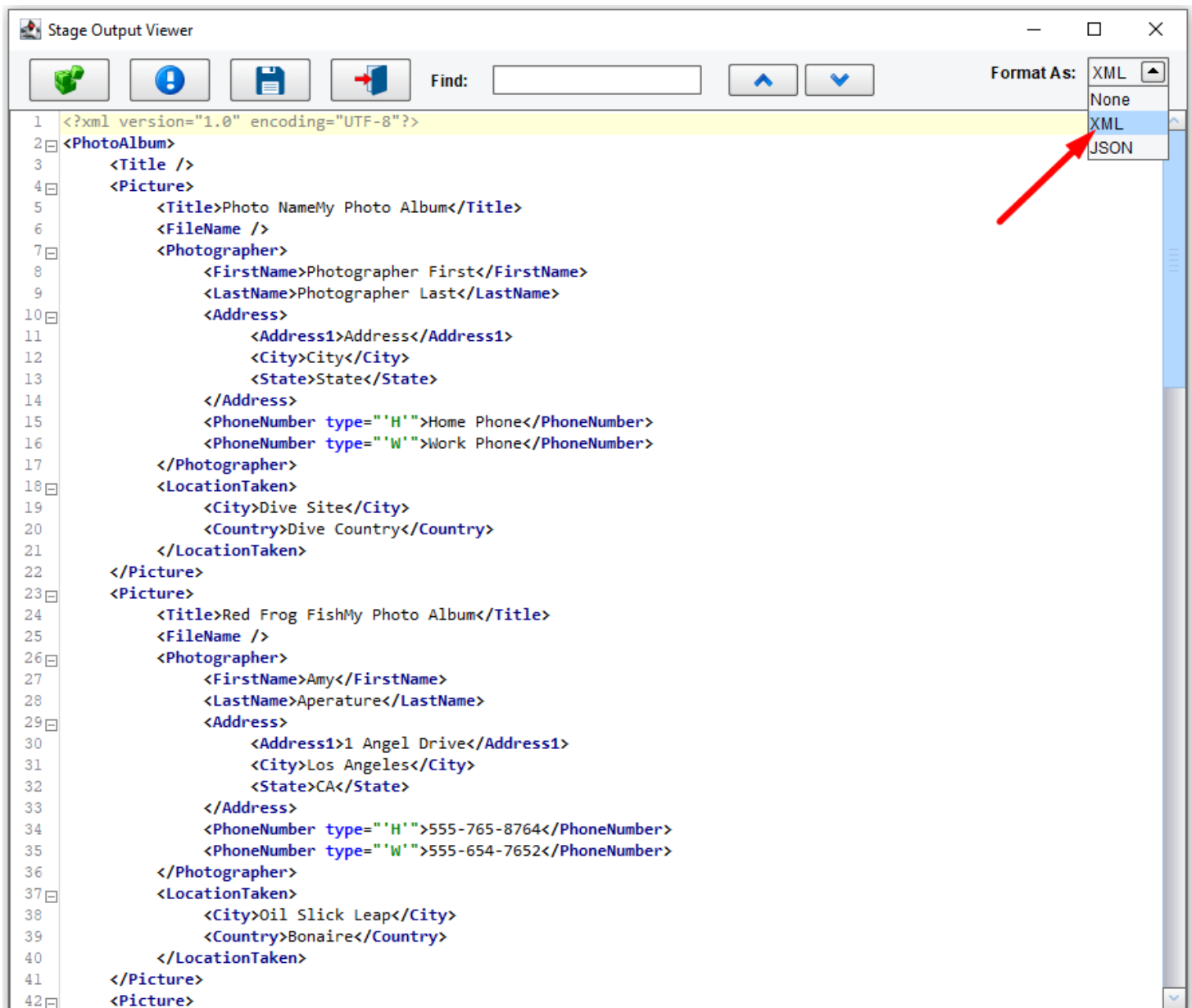
The original data processed was the tab-delimited file you first saw in the [File Specification Editor](#).



You then took that data and the File Specification Editor translated it into a generic [format](#)—Double-click on the **Delimited and Fixed-Width** row within the objects of the selected stage panel.



The **Stage Output Viewer** window opens. Choose the **XML** format in the drop-down menu.



That XML format was then converted through the [XSLT](#) generated by the [Data Mapper](#) into the Photo Album XML Standard. Double-click **XSLT** in the same panel, under the Stage Type, to view the panel above.



PilotFish eiConsole [Getting-Started-Interface]

File Edit Mode Find Tools Help

Execute Test Test Mode Configuration Clear Test Config Create testing trace

Source System	Listener	Source Transform	Route	Target Transform	Transport	Target System
Flat File Source	Getting-Started-Interface.Directory / File Listener Directory / File	FlatFileToXML	Getting-Started-Interface	Relay	Getting-Started-Interface.Directory / File Transport Directory / File	XML Capable Target

Objects within selected stage:

Stage Status	Stage Name	Stage Type
 	Router	Routing

Testing Configuration

Stage Configuration

☐ Start Test Here ☐ Skip This Stage

☐ Trace Point After Here ☐ End Test After Here

Alternate Testing Data

Source

Stage Transaction Attributes

Transaction Attributes Global Attributes

Key	Value
-----	-------

Editor Import From File Remove Remove All

Test Results

TX ID	Stage End	Stage Time	Percent	Status
1	12:18:14.556	00:00:00.009	1.08	Success

View Stage Output

Next, click the **Route** stage. The [Routing Module](#) routed the data along to the one and only Target System.





PilotFish eiConsole [Getting-Started-Interface]

File Edit Mode Find Tools Help

Execute Test Test Mode Configuration Clear Test Config Create testing trace

Source System	Listener	Source Transform	Route	Target Transform	Transport	Target System
Flat File Source	Getting-Started-Interface.Directory / File Listener Directory / File	FlatFileToXML	Getting-Started-Interface	Relay	Getting-Started-Interface.Directory / File Transport Directory / File	XML Capable Target

Objects within selected stage:

Stage Status	Stage Name	Stage Type
 	Joining	Joining
 	No Transformation	Transformation

Testing Configuration

Stage Configuration

☐ Start Test Here ☐ Skip This Stage

☐ Trace Point After Here ☐ End Test After Here

Alternate Testing Data

Source

Stage Transaction Attributes

Transaction Attributes Global Attributes

Key	Value
-----	-------

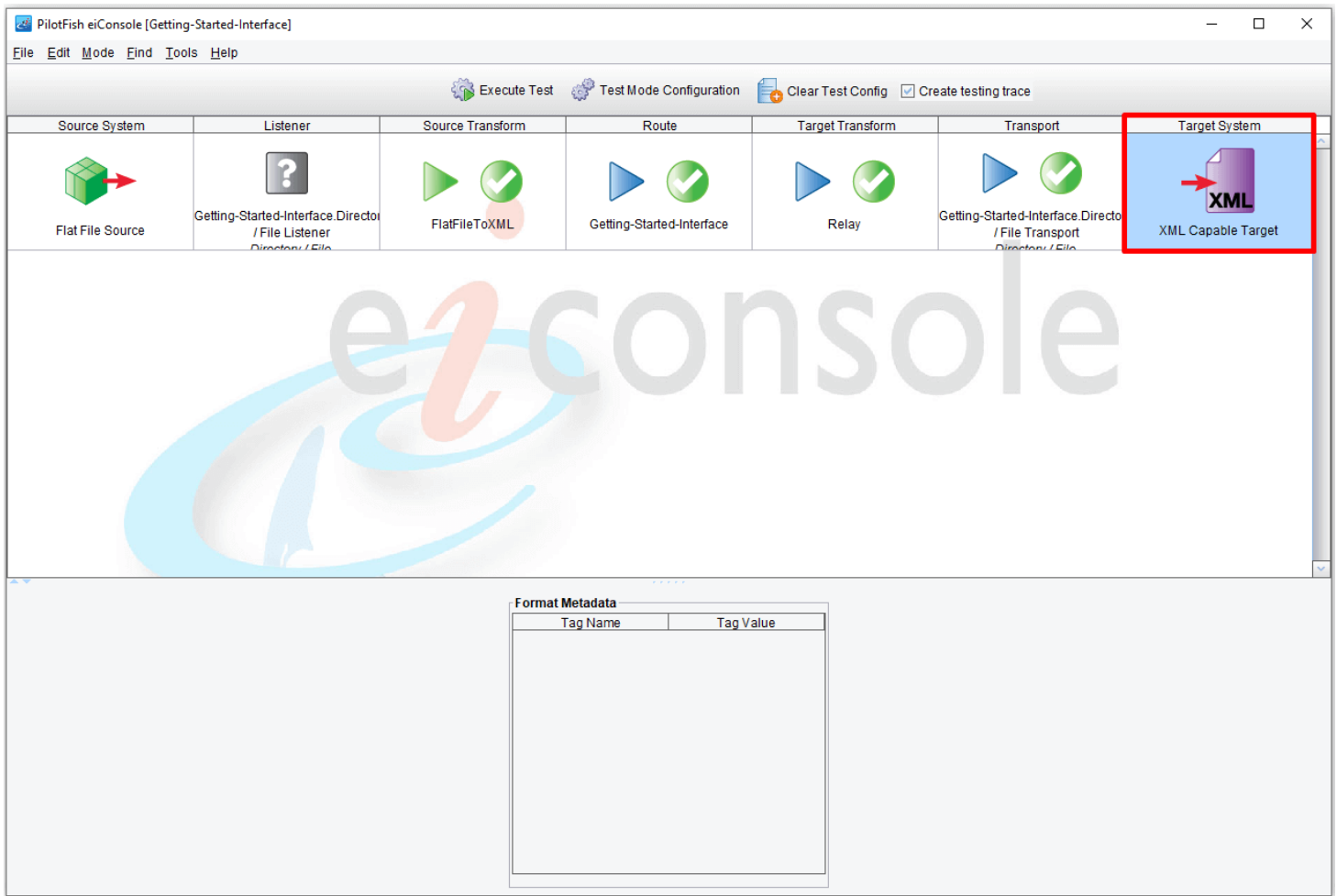
Editor Import From File Remove Remove All

Test Results

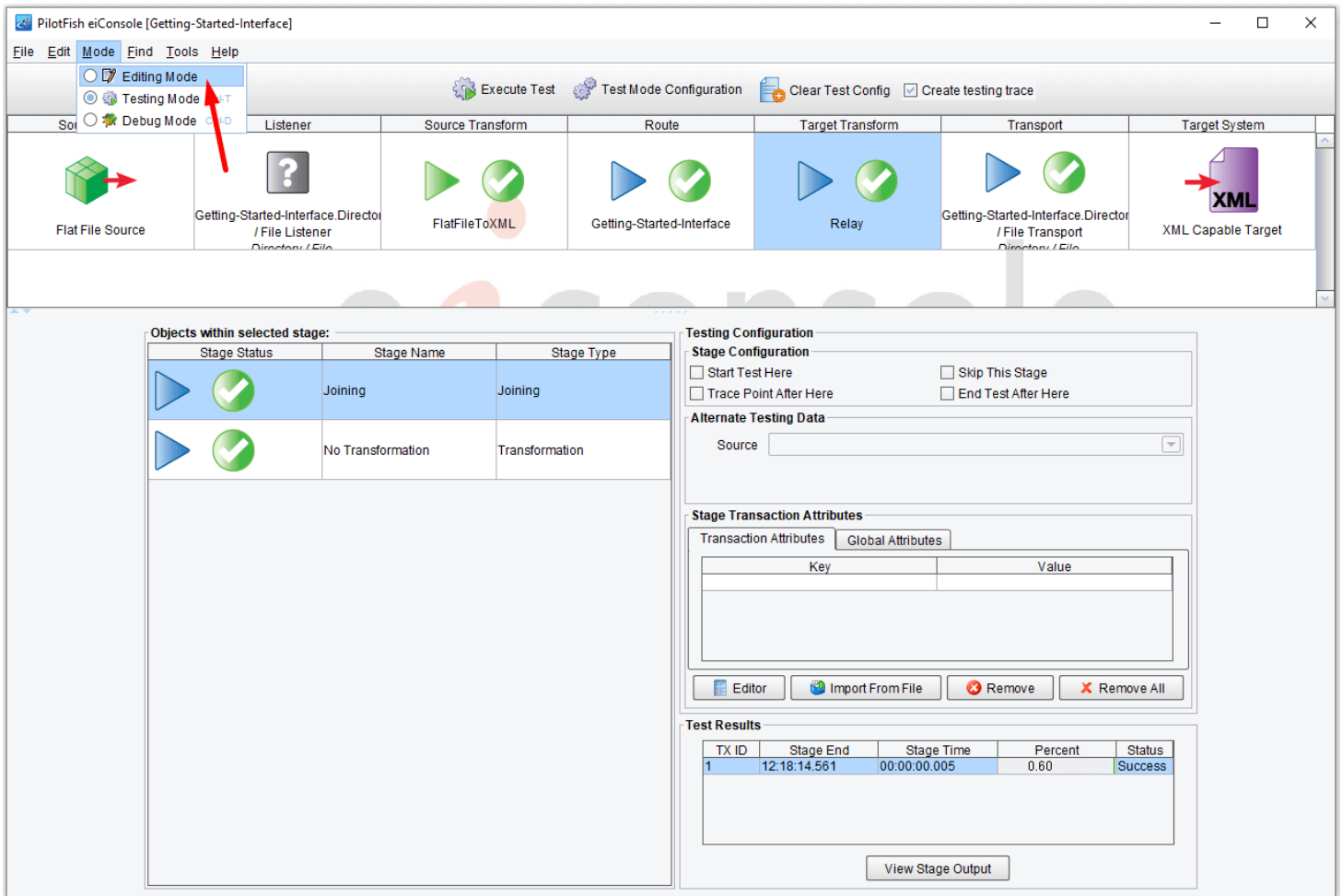
TX ID	Stage End	Stage Time	Percent	Status
1	12:18:14.561	00:00:00.005	0.60	Success

View Stage Output

Next, click the **Target Transform** stage. The Target Transformation relayed this data forward without any further transformation.

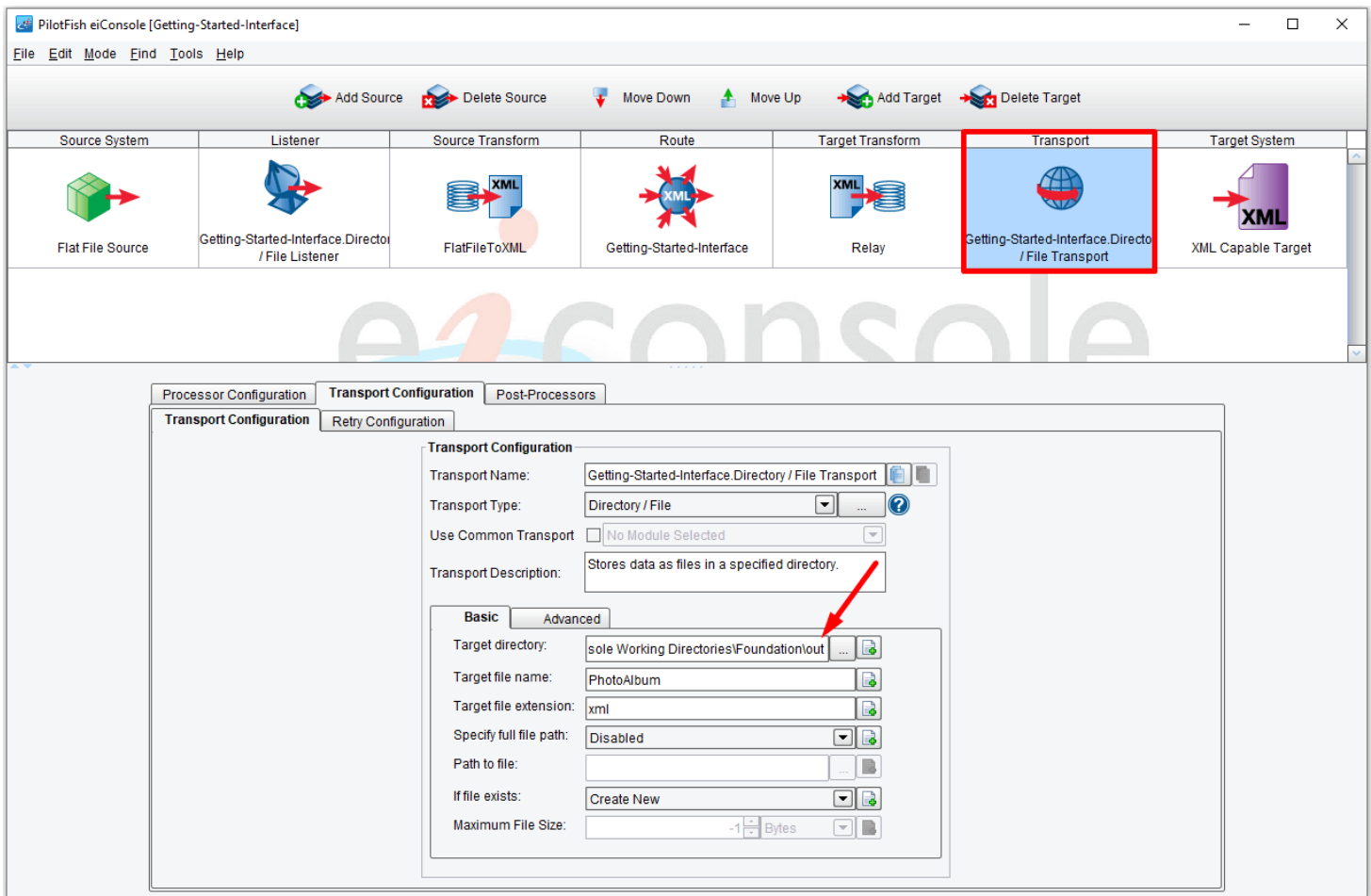


Finally, click the **Target System** stage. The Transport took that file and deposited it in the directory.

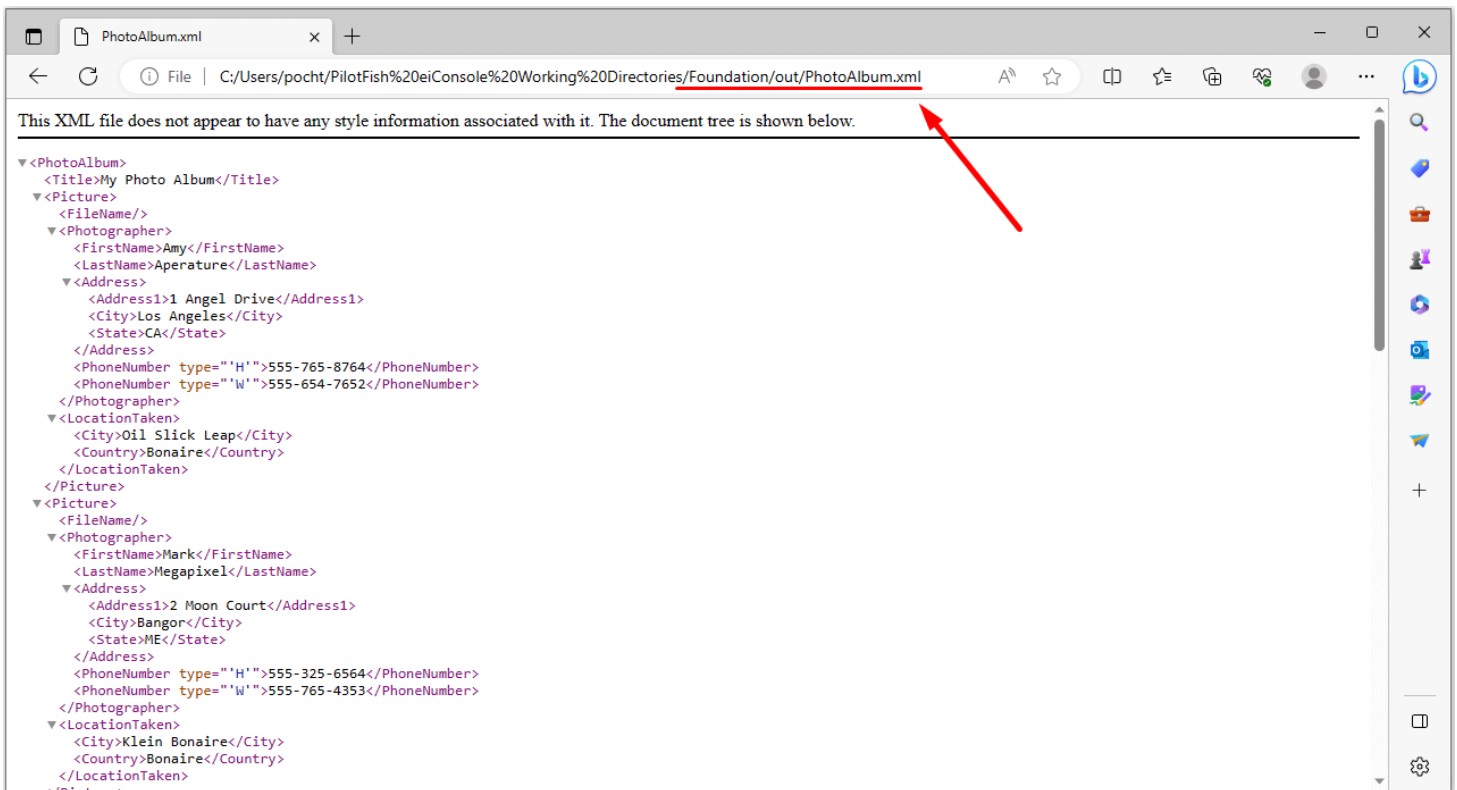


To find the file written with the Directory Transport:

- 1) Return to editing mode by selecting the [Route](#) and then **Editing Mode** from the Mode drop-down.



- 2) Select the Transport stage
- 3) Copy the contents of the "**Target directory**" configuration item
- 4) Paste the contents into a file browser on your computer, or navigate to the "**out**" directory of your [Working Directory](#) folder. In our case it's: c:\Users\{USER_NAME}\PilotFish eiConsole Working Directories\Foundation\out



5) Open the created "**PhotoAlbum.xml**" file

You have now validated that the file was deposited in the directory.

To return to the File Management window, select **File** menu and select **File Management** from the drop-down.