

## 5. Source Transformation Introduction

<https://cms.pilotfishtechnology.com/source-data-transformation-tutorial-pilotfish>

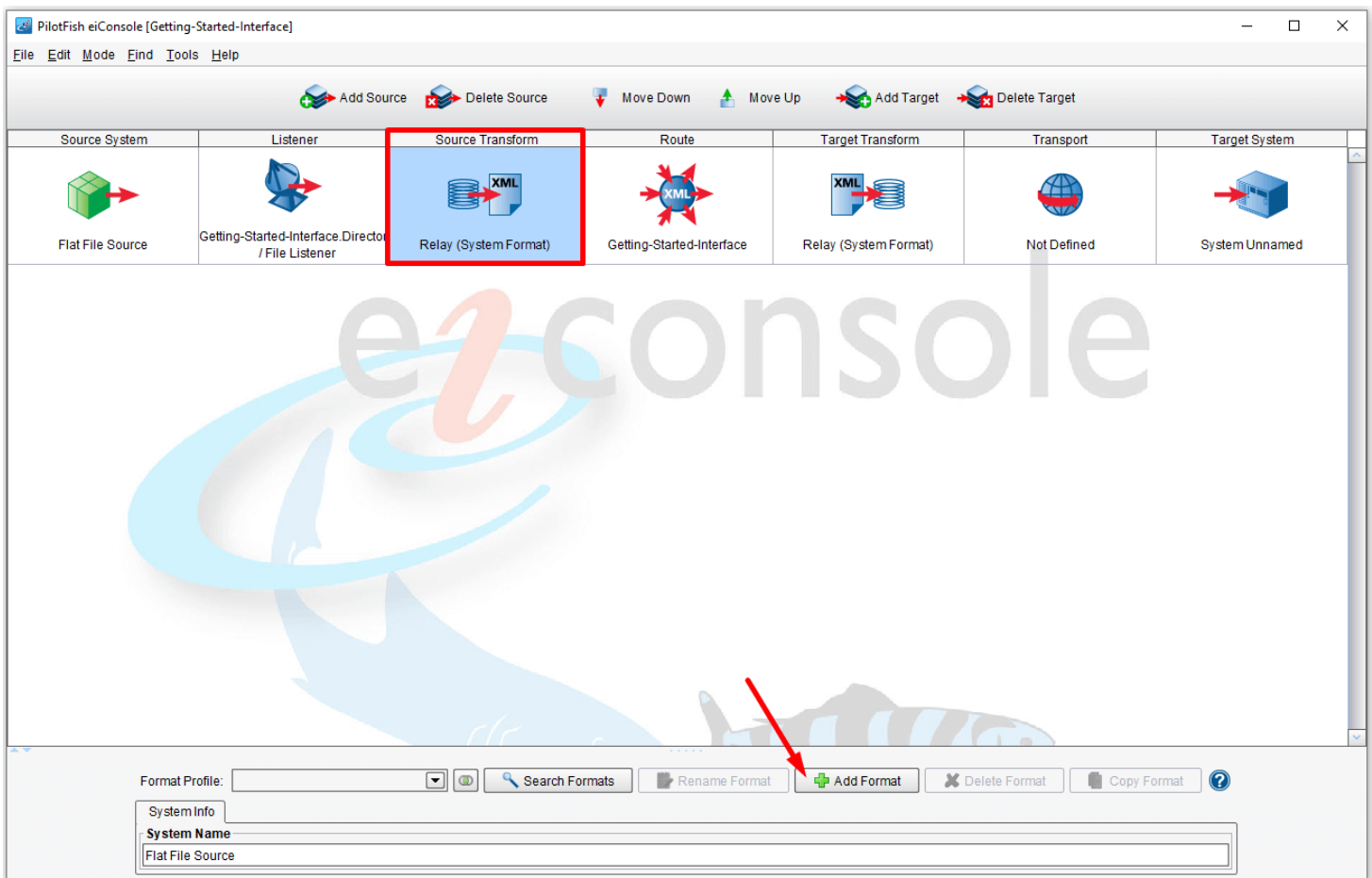
eiConsole v.24R1  
Tutorial 30 mins

# eiConsole Foundation Tutorial

## An Introduction to Source Transformation

You will need to navigate to the Working Directory `c:\Users\{USER_NAME}\PilotFish eiConsole Working Directories\Foundation` where {USER\_NAME} is the user's name which was included in the sample files you downloaded in the first Foundation Tutorial – [Creating a Working Directory](#).

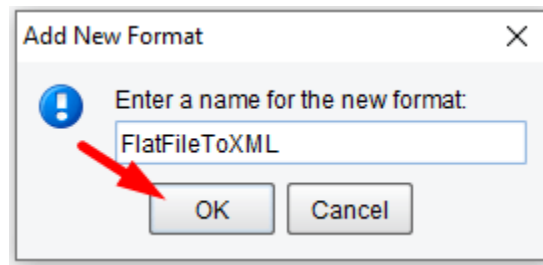
*Note: The Tutorials in the eiConsole Foundation, 1-13, are modular and are designed to be used in the sequence presented.*



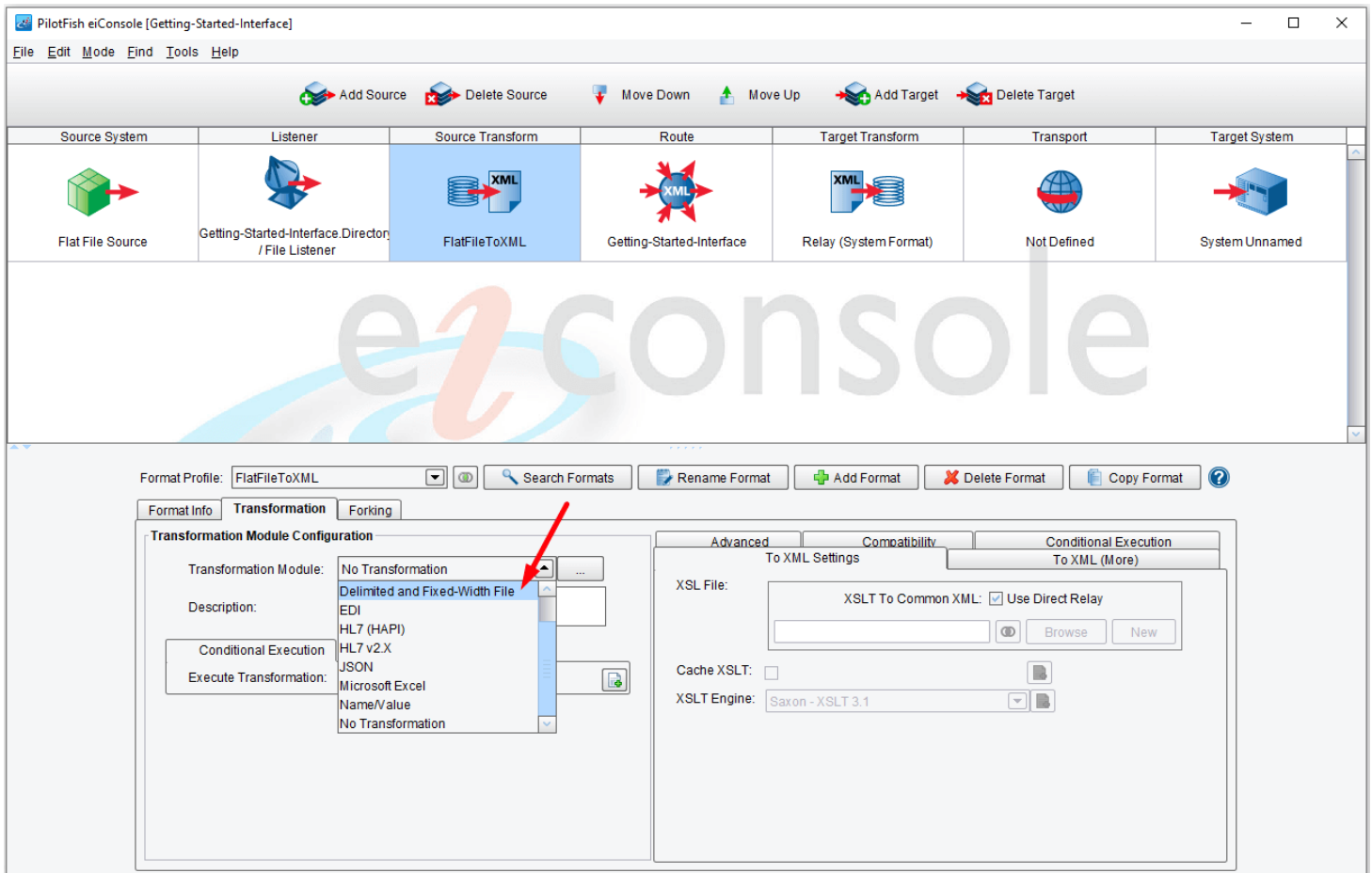
Click the **Source Transform** icon in the main [route](#) grid.

The **Source Transform** stage allows you to take data from its proprietary [format](#) (the format exported by the Source system) and translate it into the canonical XML model that you will be using for this transaction. For this [interface](#), the input is a tab-delimited text file that will be converted into an XML standard format. To do this, click the **Add Format**

button.

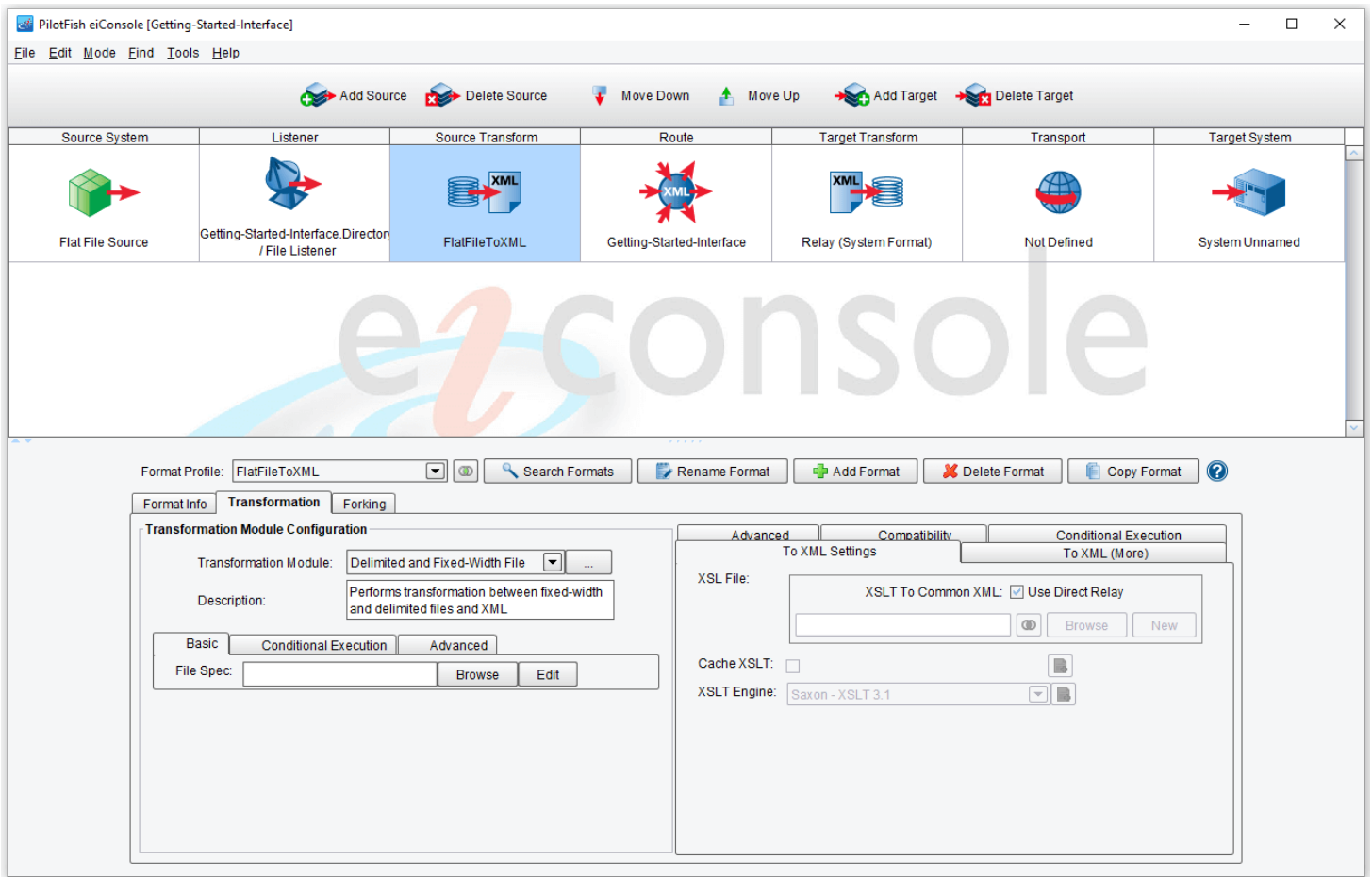


When the **Add New Format** dialogue opens, name the file "**FlatFileToXML**" and choose **OK**.

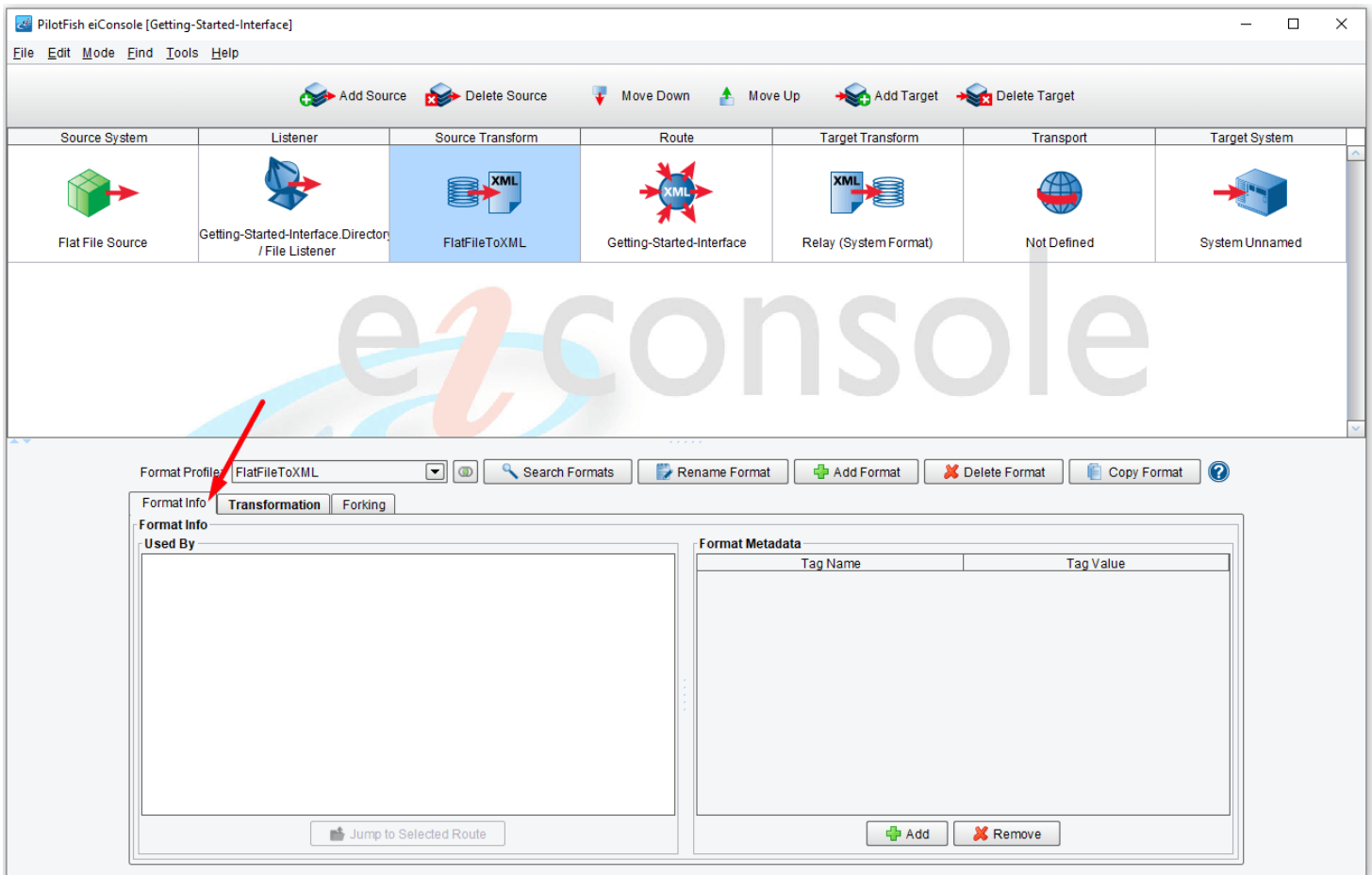


Each format has two [stages](#). The first stage is the [Transformation Module](#). This stage will allow you to take data from a non-XML format and convert it into XML. After the data is in an XML format, you will configure the [XSLT](#) to logically map the data from this XML format onto the chosen canonical structure.

To convert the tab-delimited file into XML, you will need to use the **Delimited and Fixed-Width File** transformation module. Choose this option from the Transformation Module drop-down.



Here you can see a set of tabs (Basic, Conditional Execution and Advanced) that belong to the transformation of the delimited and fixed-width file. In the next tutorial, we describe how to use it in more detail.



Also at this stage, you can add Metadata to make it that it is easier to find in a search or when sorting data later on. To add Metadata to the Source, select the **Format Info** tab.

Continue to the next tutorial, [Source Transformation - File Specification Editor](#).