

## 9. Target Transformation Introduction

<https://cms.pilotfishtechnology.com/data-conversion-process-tutorial-pilotfish>

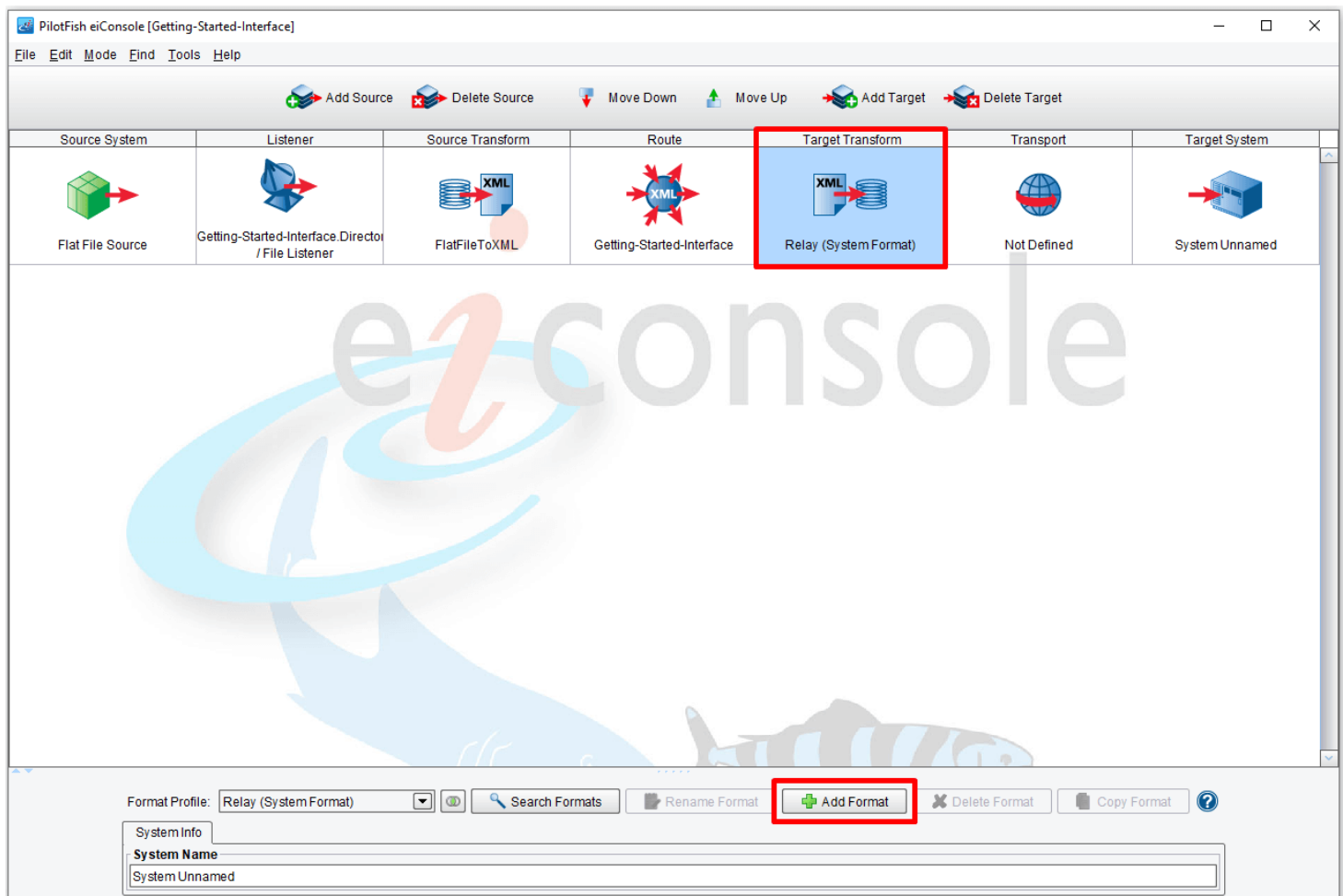
eiConsole v.24R1  
Tutorial 30 mins

### eiConsole Foundation Tutorial

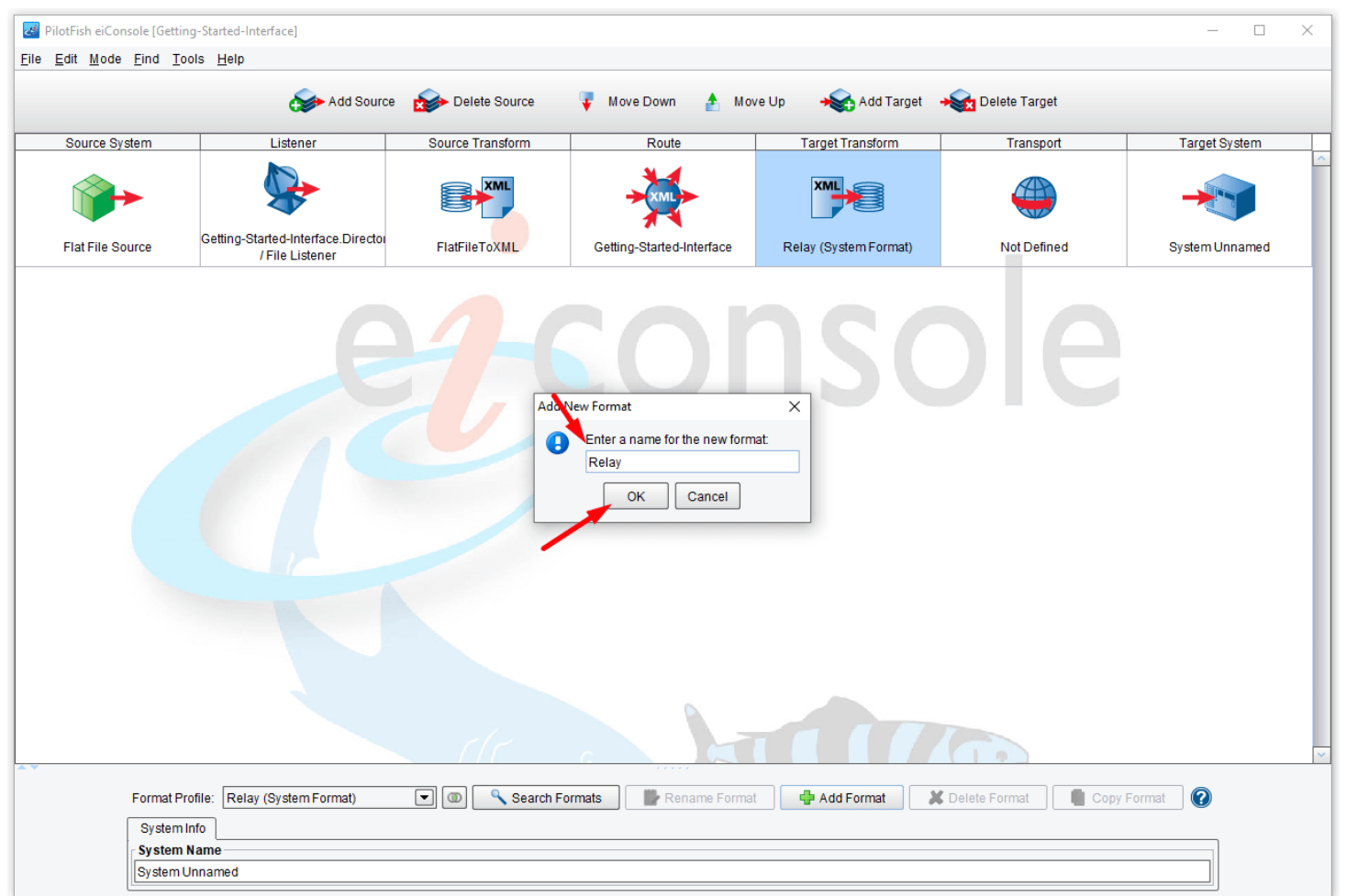
# Target Transformation Introduction

You will need to navigate to the Working Directory **c:\Users\{USER\_NAME}\PilotFish eiConsole Working Directories\Foundation** where {USER\_NAME} is the user's name which was included in the sample files you downloaded in the first Foundation Tutorial – [Creating a Working Directory](#).

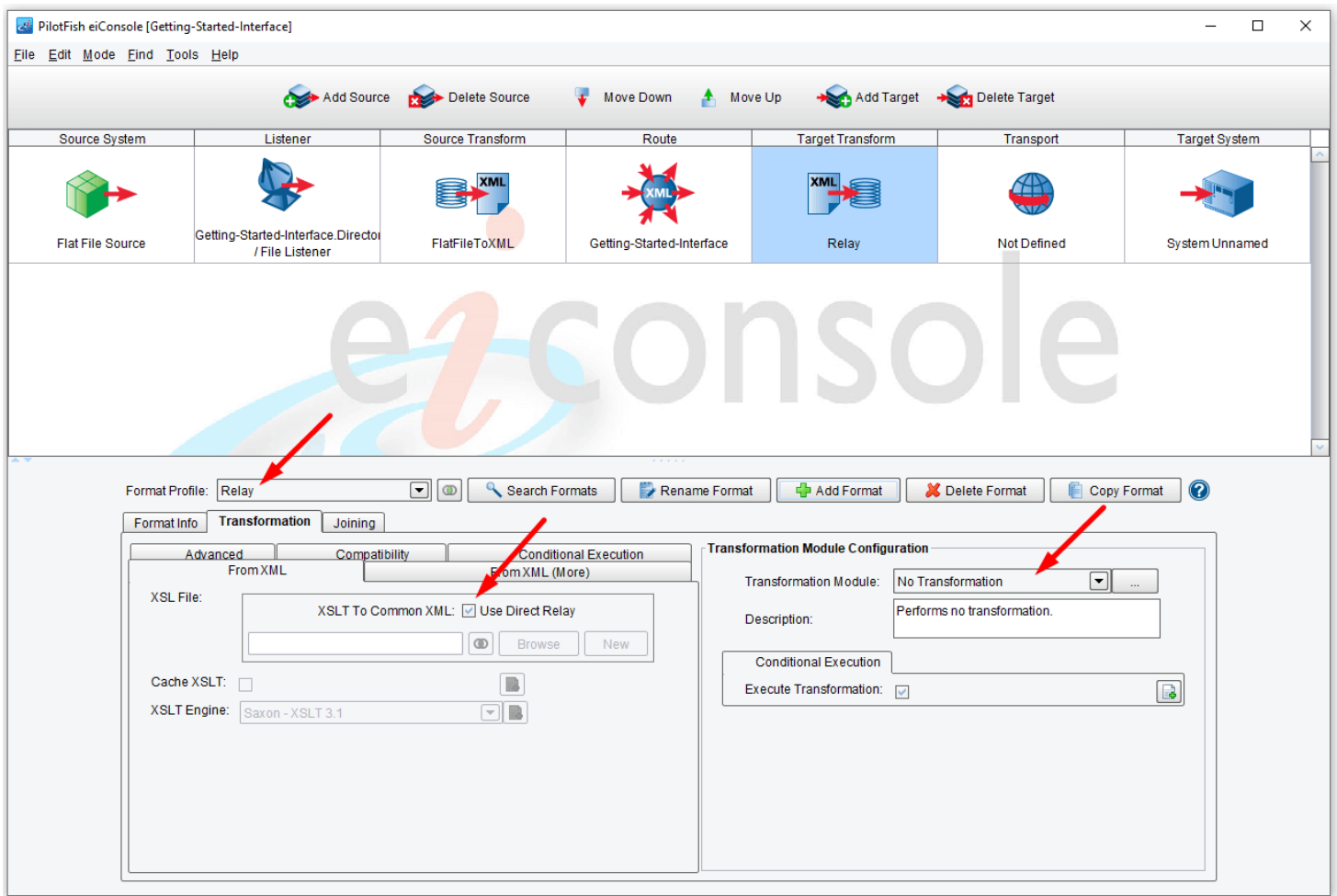
*Note: the Tutorials in eiConsole Foundation, 1-13, are modular and are designed to be used in the sequence presented.*



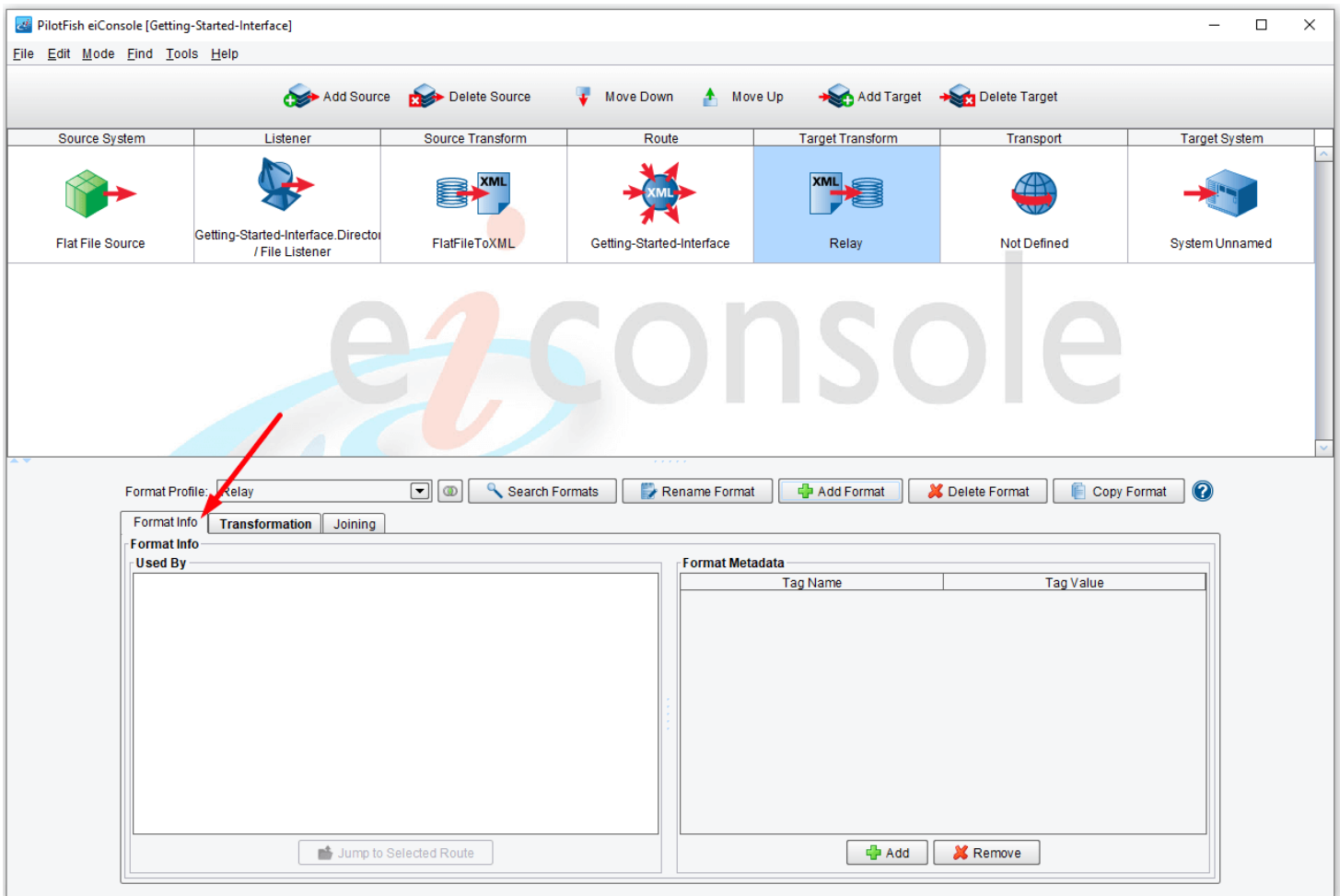
When you click the **Target Transform** stage, you will see that no [format](#) has been added. Even though a transformation is unnecessary here, you need to indicate which format to use. For this [interface](#), you will use the Relay format. Click the **Add Format** button.



When the **Add New Format** dialogue panel opens, enter "**Relay**" and click **OK**.



This opens the configuration panel in the bottom half of the window. The Relay transform sends the transaction data to the next stage unchanged. Even though a transformation is unnecessary here, you must indicate which format to use. Also, for this interface, you will use the Relay format - which now appears on the Format Profile field interface, keep the default **From XML** configuration for this interface and keep **Use Direct Relay** checked. The [Transformation Module](#) should be set to the default - **No Transformation**.



Just like what you have observed at the **Source Transform** stage - at the **Target Transform** stage, you can add the Metadata for the [Target](#) interface. To do that, use the **Format Info** tab.

Next, proceed to the [transport configuration](#) tutorial.