

11. Adding Target Icon and Name (Tutorial)

<https://cms.pilotfishtechnology.com/adding-target-icon-example-pilotfish>

eiConsole v.23R1

Tutorial 15 mins

eiConsole Foundation Adding Target Icon and Name

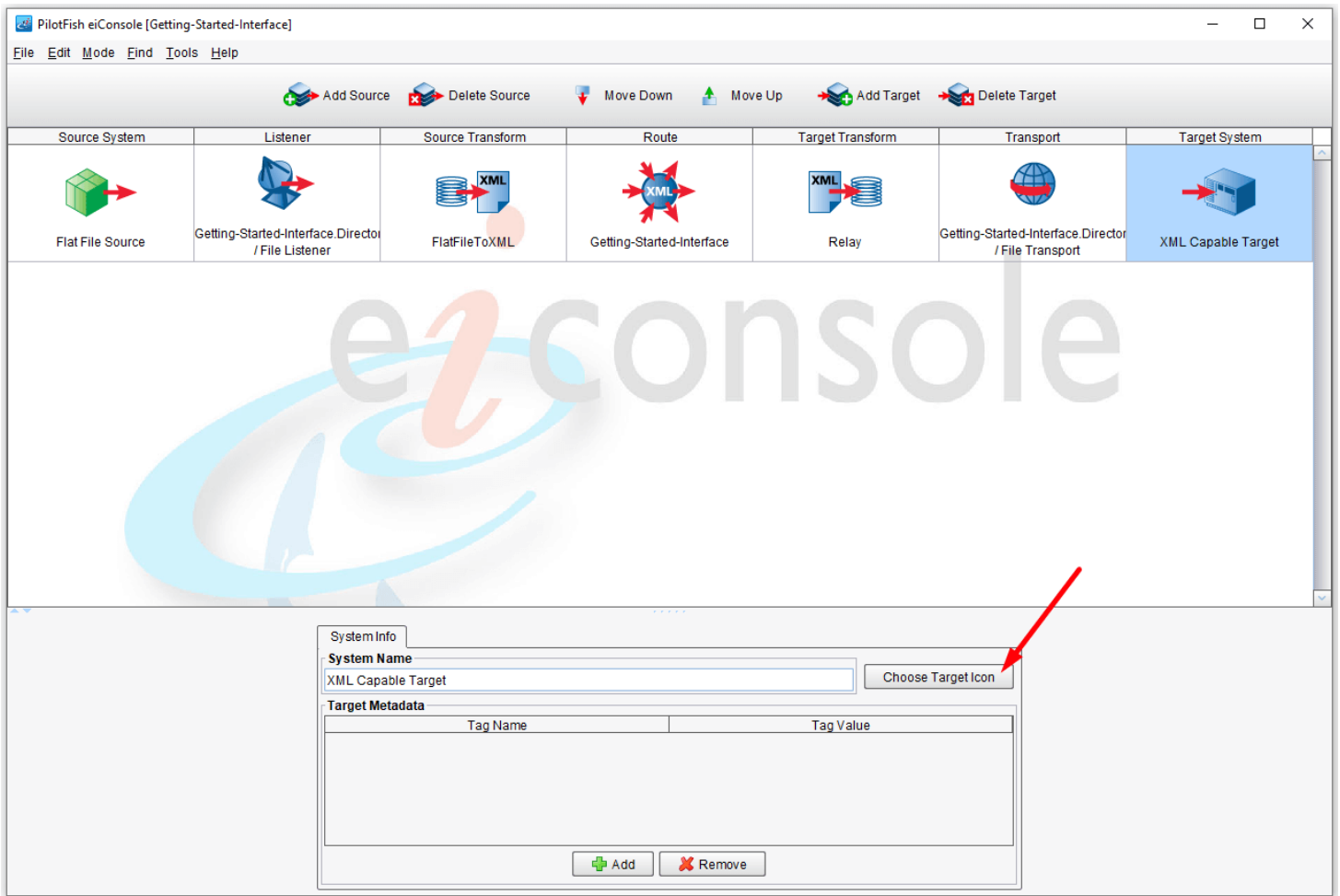
You will need to download sample files to do this tutorial. If you have not done so yet, please click this [LINK](#).

Note: The Tutorials in eiConsole Foundation, 1-13, are modular and designed to be used in the sequence presented.

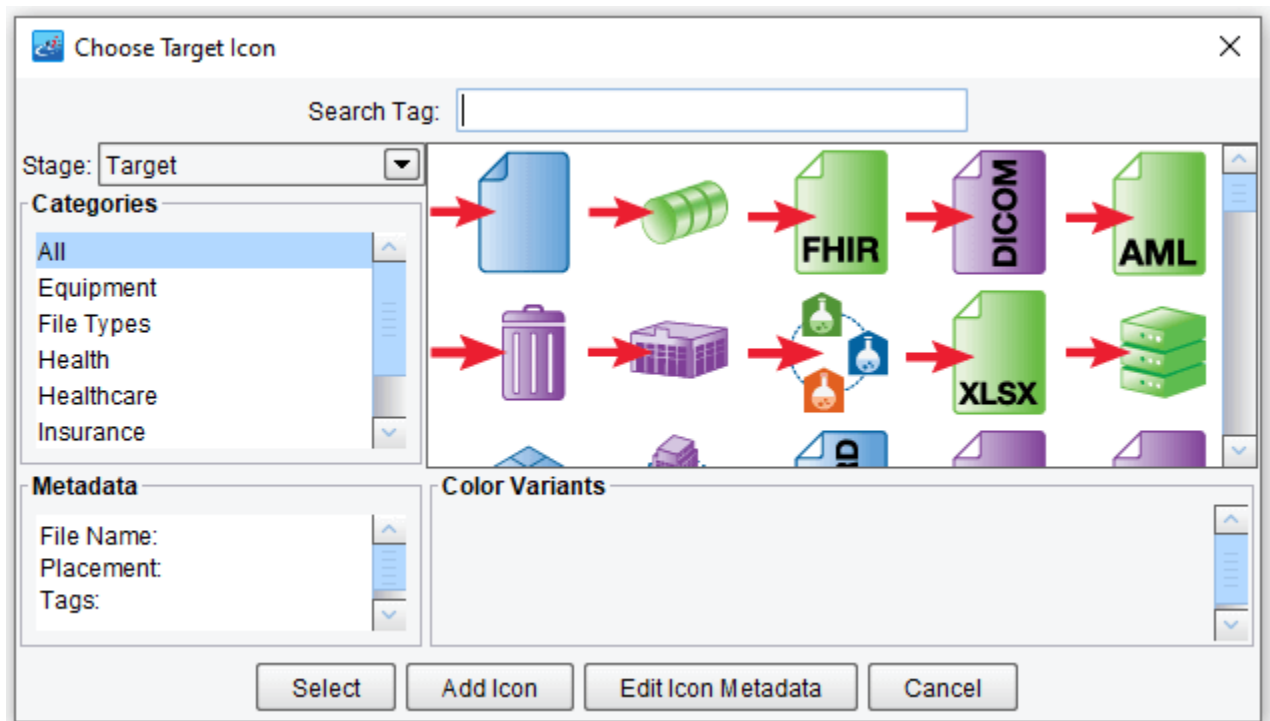
The screenshot shows the eiConsole interface with a workflow diagram at the top and a configuration panel at the bottom. The workflow diagram includes stages: Source System (Flat File Source), Listener (Getting-Started-Interface Director / File Listener), Source Transform (FlatFileToXML), Route (Getting-Started-Interface), Target Transform (Relay), Transport (Getting-Started-Interface Director / File Transport), and Target System (XML Capable Target). The Target System stage is highlighted with a red box. The configuration panel below shows the 'System Name' field containing 'XML Capable Target', with a red arrow pointing to it. There is also a 'Choose Target Icon' button and a 'Target Metadata' table with columns for 'Tag Name' and 'Tag Value'. At the bottom of the panel are 'Add' and 'Remove' buttons.

In order to add a Target System name, select the **Target System** stage.

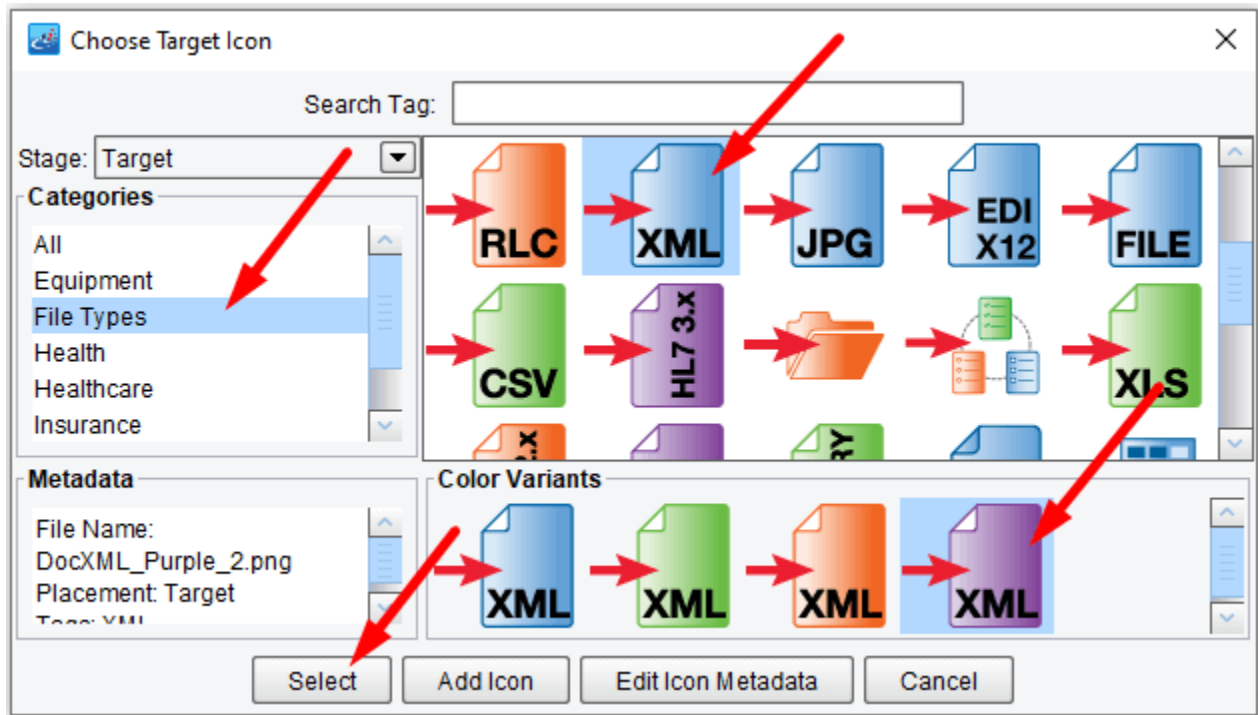
For the Target, you can enter the name in the System Name field. Type in "**XML Capable Target**" then click **enter/return**. Note that the Target System is now defined as XML Capable Target.



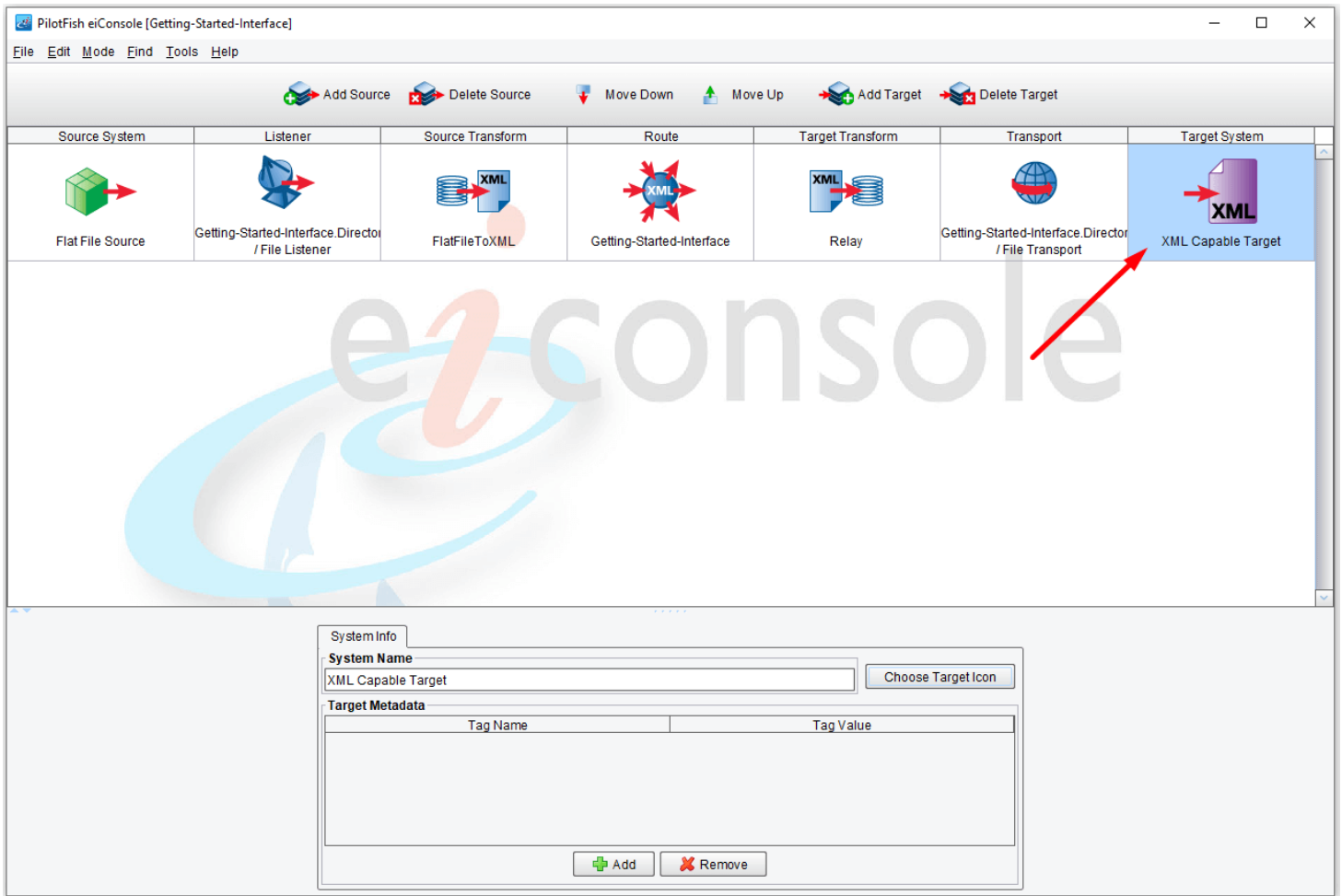
Now, click on the **Choose Target Icon** button.



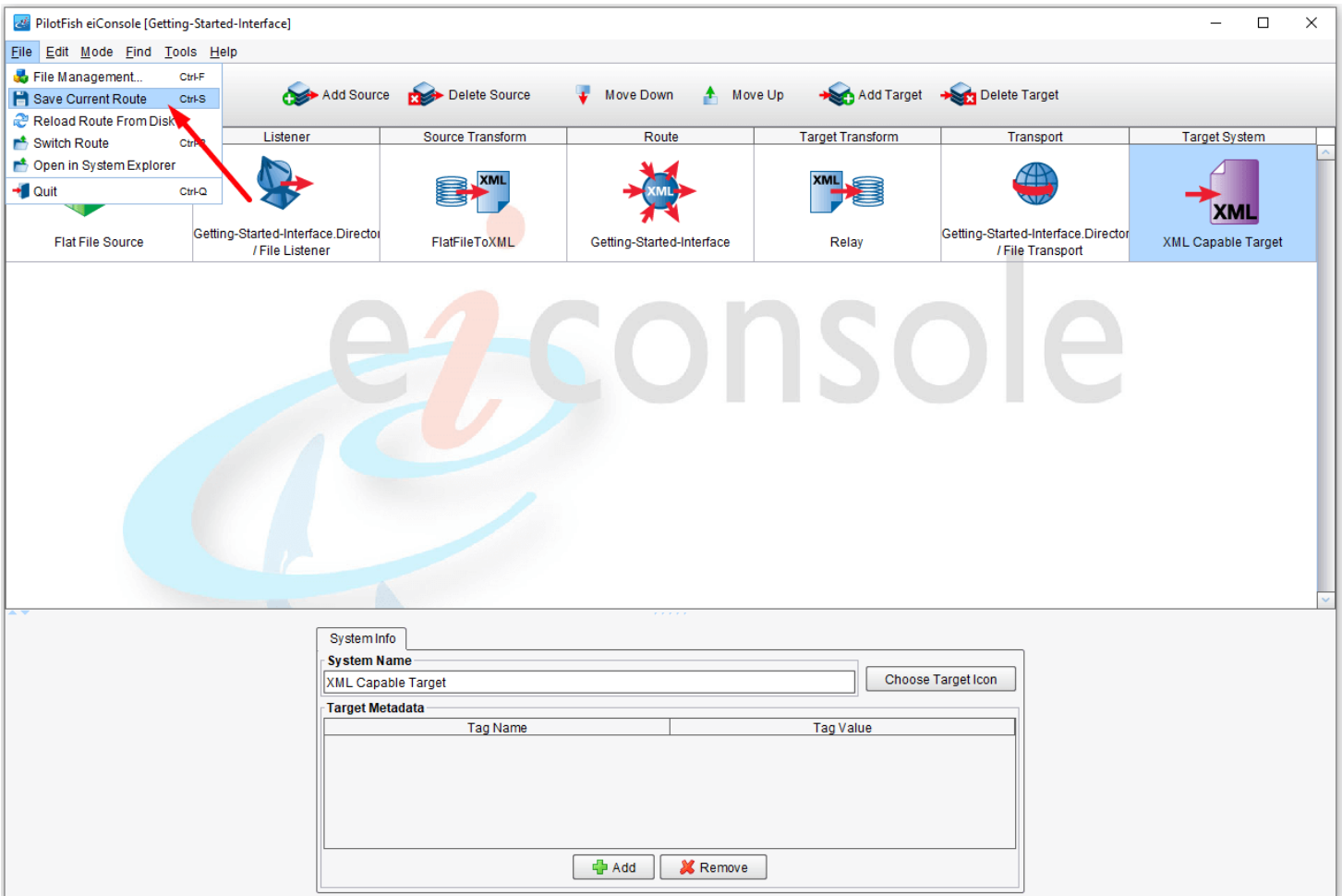
The **Choose Target Icon** dialog will appear.



In the **Categories** field, click on the **File Types** and select the **XML** icon in the main field. Choose the desired color of the icon. Click **Select**.



The new icon will appear in the main grid of the eiConsole.



Now that the Source System and Target System have been defined, go to the **File** menu and click **Save Current Route**.